

ILS Y or LOC/DME Y RWY 32

LOC I-EAF 109.9	APCH CRS 320°	Rwy ldg TDZE Arpt Elev 14,530 548 548
---------------------------	-------------------------	---

AL-1729 [USAF]

EIELSON AFB (PAEI)

▼ * When ALS inop, increase RVR to 40 and vis to ¾ mile.
** When ALS inop, increase CAT AB RVR to 55, vis to 1 mile; CAT CDE RVR to 60, vis to 1½ mile.



MISSED APPROACH: Climbing left turn on EIL R-249 to 4000 to WAKOV and hold. Continue climb-in-hold.

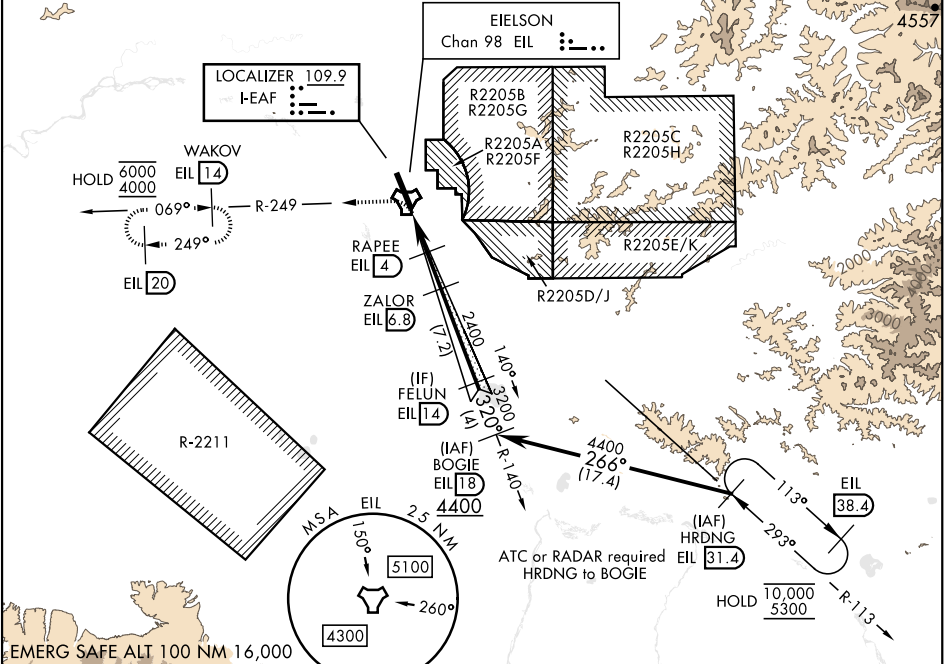
ATIS ★ 119.9 273.5	FAIRBANKS APP CON 127.1 251.1 360° - 179° 125.35 363.2 180° - 359°
------------------------------	--

TOWER ★ 127.2 352.05

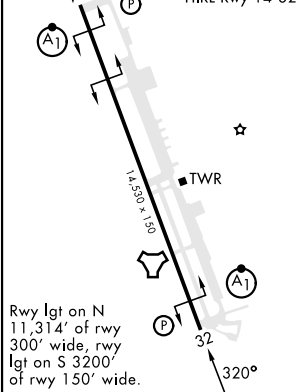
GND CON 121.8 275.8

CLNC DEL 343.7

*** Circling not authorized E of Rwy 14-32.
Missed approach requires the use of RNAV or ATC RADAR monitoring.

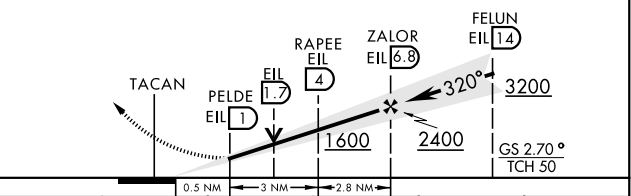


ELEV 548	TDZE 548
-----------------	-----------------



VGSI and ILS glidepath not coincident (VGSI angle 2.70/TCH 44).

4000 EIL R-249	WAKOV R-249 14
----------------------	----------------------



CATEGORY	A	B	C	D	E
S-ILS 32*	748/24		200	(200-½)	
S-LOC 32**	960/24	412 (500-½)	960/40	412	(500-¾)
CIRCLING ***	1000-1	1040-1	1040-½	1280-2¼	1280-2½
	452 (500-1)	492 (500-1)	492 (500-½)	732 (800-2¼)	732 (800-2½)

ILS Y or LOC/DME Y RWY 32

AK, 12 JUN 2025 to 07 AUG 2025

AK, 12 JUN 2025 to 07 AUG 2025