

LOC I-EIL 110.5	APCH CRS 140°	Rwy ldg 14,530 TDZE 537 Arpt Elev 548
---------------------------	-------------------------	--

[USAF]

EIELSON AFB (PAEI)

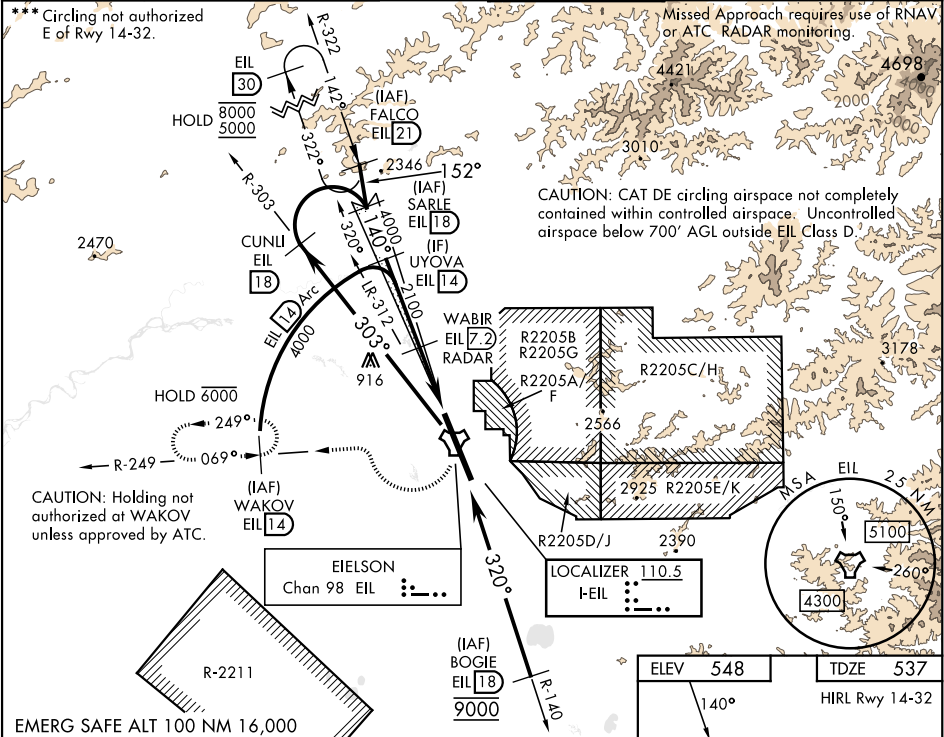
RADAR or DME required.

▼ * When ALS inop, incr RVR to 40, and vis to ¾ mile.
** When ALS inop, incr CAT AB RVR to 55, and vis to 1 mile; CAT CDE vis to 1½ miles.



MISSED APPROACH: Climb to 4000 direct EIL TACAN, continue climbing right turn to intercept EIL R-249 to WAKOV and hold. Continue climb-in-hold to 4000.

ATIS★ 119.9 273.5	ASOS 118.525	FAIRBANKS APP CON 127.1 251.1 360°-179° 125.35 363.2 180°-359°	TOWER★ 127.2 352.05	GND CON 121.8 275.8	CLNC DEL 343.7
-----------------------------	------------------------	--	-------------------------------	-------------------------------	--------------------------



EMERG SAFE ALT 100 NM 16,000					
VGSI and ILS glidepath not coincident (VGSI angle 2.70/TCH 54).					
CATEGORY	A	B	C	D	E
S-ILS 14*	737/24		200	(200-½)	
S-LOC 14**	1000/24 463 (500-½)		1000/50	463 (500-1)	
*** CIRCLING	1000-1 452 (500-1)	1040-1 492 (500-1)	1040-1½ 492 (500-1½)	1280-2¼ 732 (800-2¼)	1280-2½ 732 (800-2½)

