

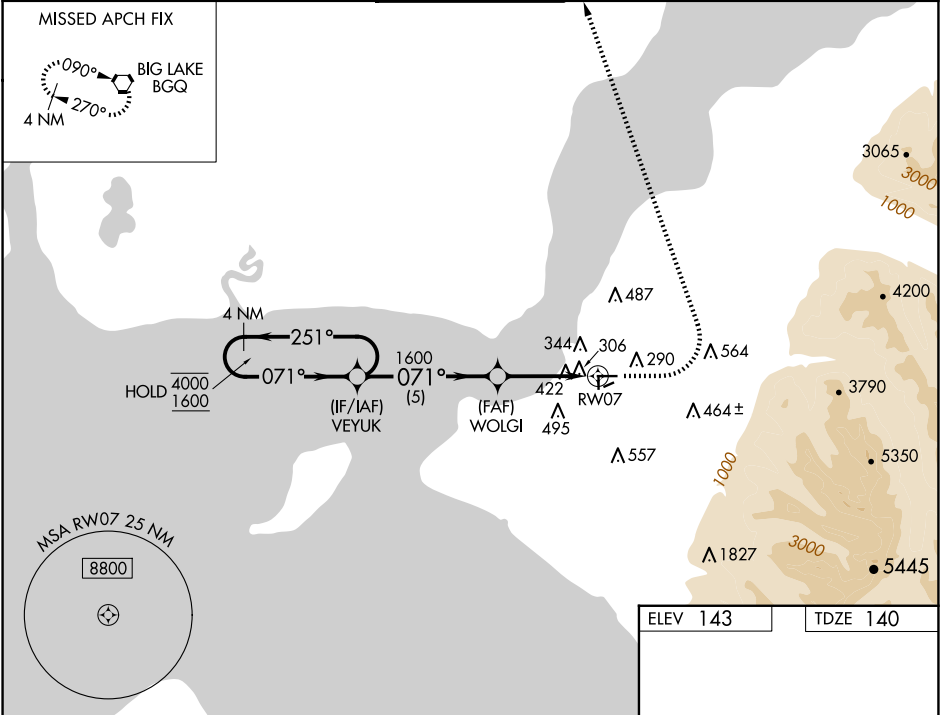
WAAS CH <b>67473</b> <b>W07B</b>	APP CRS <b>071°</b>	Rwy Idg TDZE <b>140</b> Apt Elev <b>143</b>
--	------------------------	---

RNAV (GPS) Y RWY 7

MERRILL FLD (MRI) (PAMR)

RNP APCH - GPS.		MISSED APPROACH: Climb to 1000 then climbing left turn to 2000 direct BGG VORTAC and hold.
RADAR required for procedure entry.		
<div><div><div>▼</div><div>▲</div></div><div>When local altimeter setting not received, use Ted Stevens Anchorage Intl altimeter setting and increase LPV DA to 801 feet. Increase all MDAs 20 feet. Helicopter visibility reduction below 1 SM NA. Circling Rwy 16, 34, 5 and 23 NA at night.</div></div>		

ATIS <b>124.25</b>	ANCHORAGE APP CON <b>119.1 363.2</b>	MERRILL TOWER ★ <b>126.0 (CTAF) 0</b>	GND CON <b>121.7</b>	UNICOM <b>122.95</b>
-----------------------	---	--	-------------------------	-------------------------



4 NM Holding Pattern		VEYUK	WOLGI	1000	2000	BGQ
4000 1600		251° 071°	071° 1600	1000	2000	BGQ
GP 3.75° TCH 43						
		5 NM	3.6 NM			
CATEGORY	A	B	C	D		
LPV DA	788-1 $\frac{7}{8}$	648 (700-1 $\frac{7}{8}$ )	NA			
LNAV MDA	680-1	540 (600-1)	NA			
CIRCLING	740-1 597 (600-1)	800-1 657 (700-1)	NA			

ELEV 143

TDZE 140

REIL Rws 7, 16, 25, and 34 0  
MIRL Rws 7-25 and 16-34 0