

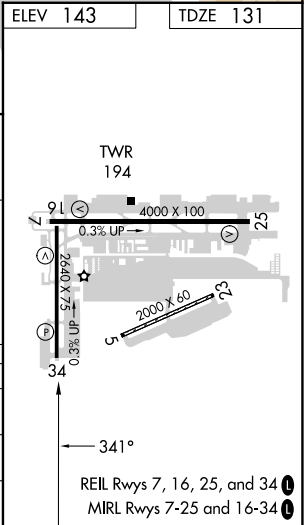
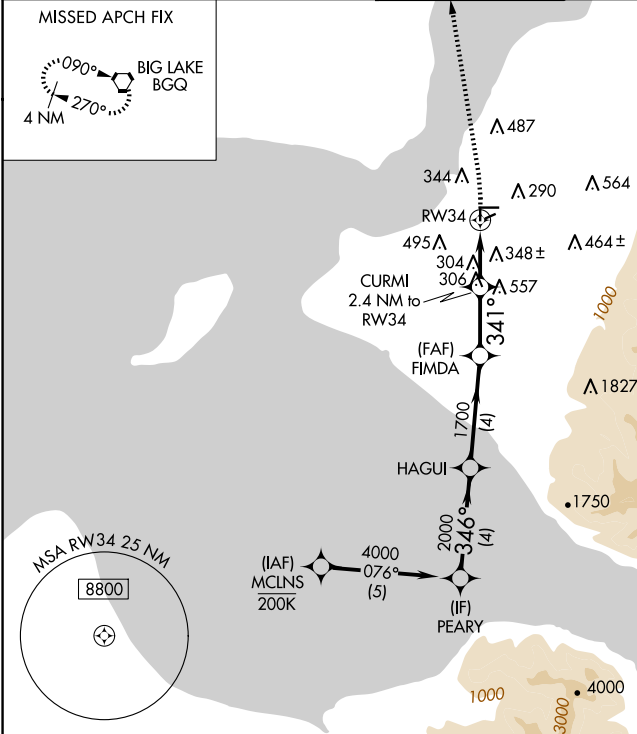
WAAS CH <b>47267</b> <b>W34A</b>	APP CRS <b>341°</b>	Rwy Idg TDZE <b>131</b> Apt Elev <b>143</b>
--	------------------------	---

RNAV (GPS) RWY 34

MERRILL FLD (MRI) (PAMR)

RNP APCH - GPS.	MISSED APPROACH: Climbing left turn to 2000 direct BQG VORTAC and hold.
RADAR required for procedure entry.	
When local altimeter setting not received, use Ted Stevens Anchorage Intl altimeter setting and increase all MDAs 20 feet. Procedure NA at night. Helicopter visibility reduction below 1 SM NA.	

ATIS <b>124.25</b>	ANCHORAGE APP CON <b>119.1 363.2</b>	MERRILL TOWER * <b>126.0 (CTAF) 0</b>	GND CON <b>121.7</b>	UNICOM <b>122.95</b>
-----------------------	---	--	-------------------------	-------------------------



VGSI and descent angles not coincident (VGSI Angle 3.00/TCH 21).

PEARY	HAGUI	FIMDA	CURMI	RW34
4000	2000	1700	900	
346°	341°	341°		
4 NM	4 NM	2.5 NM	2.4 NM	

CATEGORY	A	B	C	D
LP MDA	560-1	429 (500-1)	NA	
LNAV MDA	600-1	469 (500-1)	NA	
CIRCLING	740-1 597 (600-1)	800-1 657 (700-1)	NA	