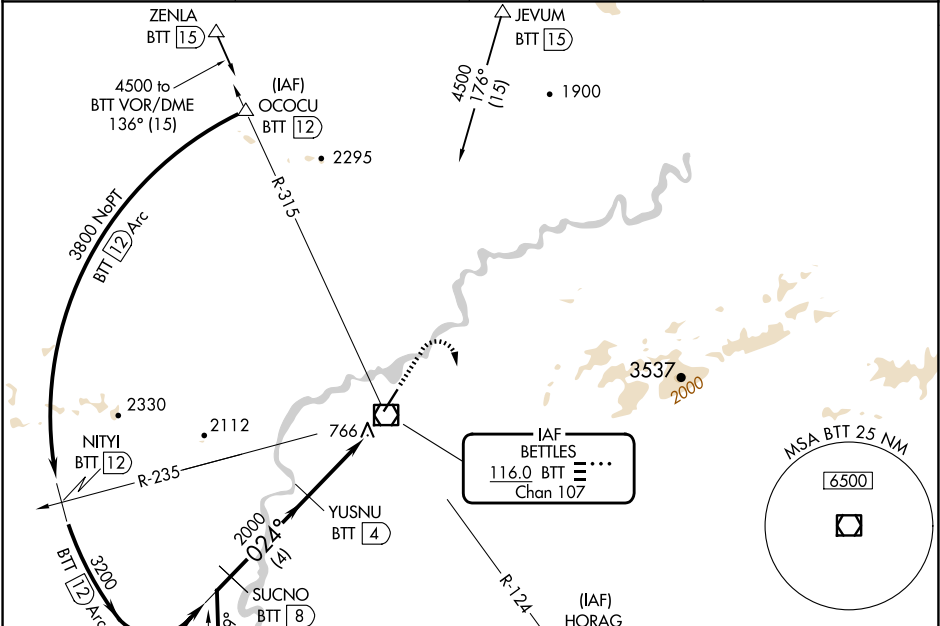


VOR/DME BTT	APP CRS	Rwy Idg	5190
116.0	024°	TDZE	642
Chan 107		Apt Elev	647

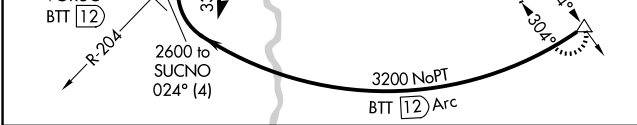
VOR RWY 2
BETTLES (BTT)(PABT)

DME required.	MALS	MISSED APPROACH: Climbing right turn to 3500 on BTT VOR/DME R-124 to HORAG/BTT 12 DME and hold, continue climb-in-hold to 3500.
<p>▼ Rwy 2 helicopter visibility reduction below 3/4 SM NA. Circling NA east of Rwy 2-20. Inoperative table does not apply to Cats A/B. For inop ALS, increase S-2 Cat C/D visibility to 1 3/4 SM.</p> <p>❄ -44°C</p>	<p>⬇</p> <p>Ⓜ</p>	

ASOS	ANCHORAGE CENTER	FAIRBANKS RADIO	CTAF
135.45	124.6 352.0	122.2	122.9 0



ELEV 647	TDZE 642
----------	----------



Visual Segment - Obstacles.				
Remain within 10 NM				
3400 204° SUCNO BTT 8				
2600 024° YUSNU BTT 4				
2000 024° BTT 1.3				
4 NM 2.7 NM 1.3 NM 0.1				
CATEGORY	A	B	C	D
S-2	1100-1 458 (500-1)			
CIRCLING	1100-1	453 (500-1)	1320-2 673 (700-2)	1320-2 1/4 673 (700-2 1/4)

