

BETTLES, ALASKA

AL-1501 (FAA)

24361

APP CRS <b>191°</b>	Rwy Idg <b>5190</b> TDZE <b>647</b> Apt Elev <b>647</b>
------------------------	---

RNAV (GPS) RWY 20  
BETTES(BTT)(PABT)

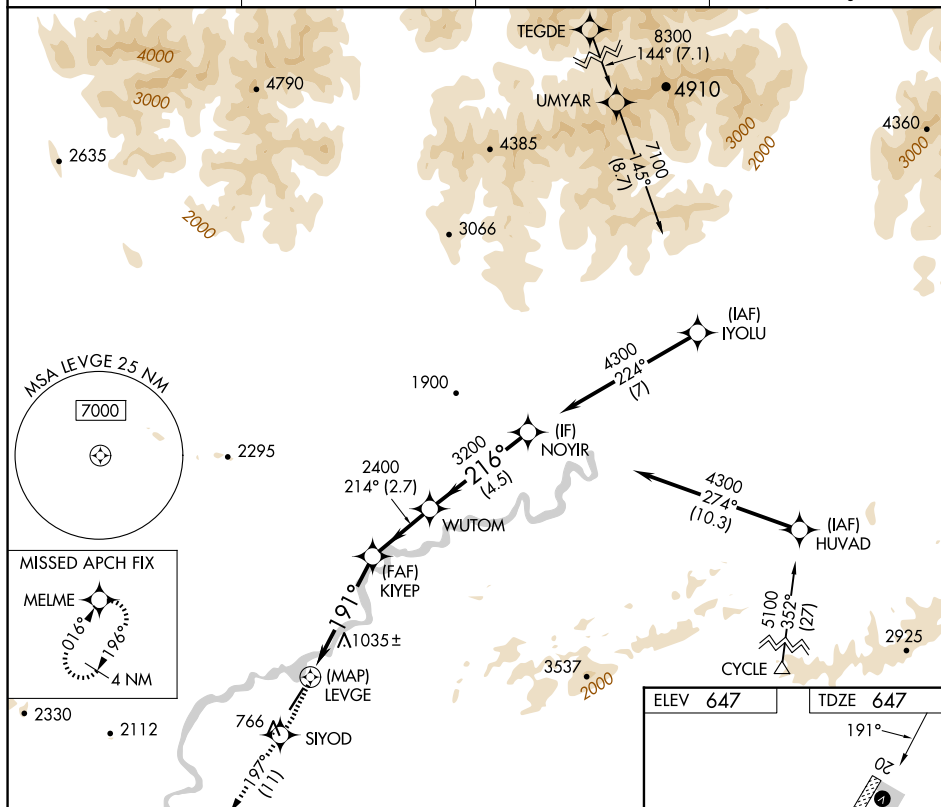
RNP APCH.



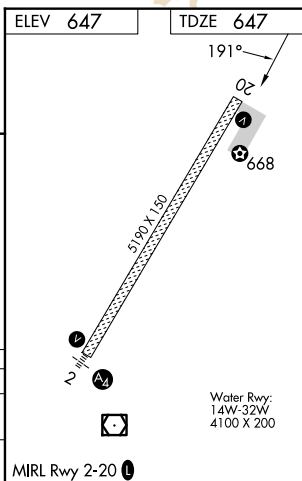
Circling NA east of Rwy 2-20. Rwy 20 helicopter visibility reduction below  $\frac{3}{4}$  SM NA.

**MISSED APPROACH:** Climb to 3200 direct SIYOD and on track 197° to MELME and hold.

ASOS <b>135.45</b>	ANCHORAGE CENTER <b>124.6 352.0</b>	FAIRBANKS RADIO <b>122.2</b>	CTAF <b>122.9</b>
-----------------------	--	---------------------------------	----------------------



3200 ↑	SIYOD ✦	tr 197° ✦	MELME ✦	KIYEP ✦				WUTOM ✦	NOYIR ✦
CATEGORY	A		B		C		D		
LNAV MDA	1300-1 653 (700-1)		1300-1 653 (700-1½)		1300-1 653 (700-1½)				
<b>C</b> CIRCLING	1300-1 653 (700-1)		1320-2 673 (700-2)		1320-2 673 (700-2½)		1320-2 673 (700-2½)		



BETTLES, ALASKA  
Amdt 1 24MAY18

66°55'N-151°32'W

BETTLES(BTT)(PABT)  
RNAV (GPS) RWY 20

AK, 12 JUN 2025 to 07 AUG 2025