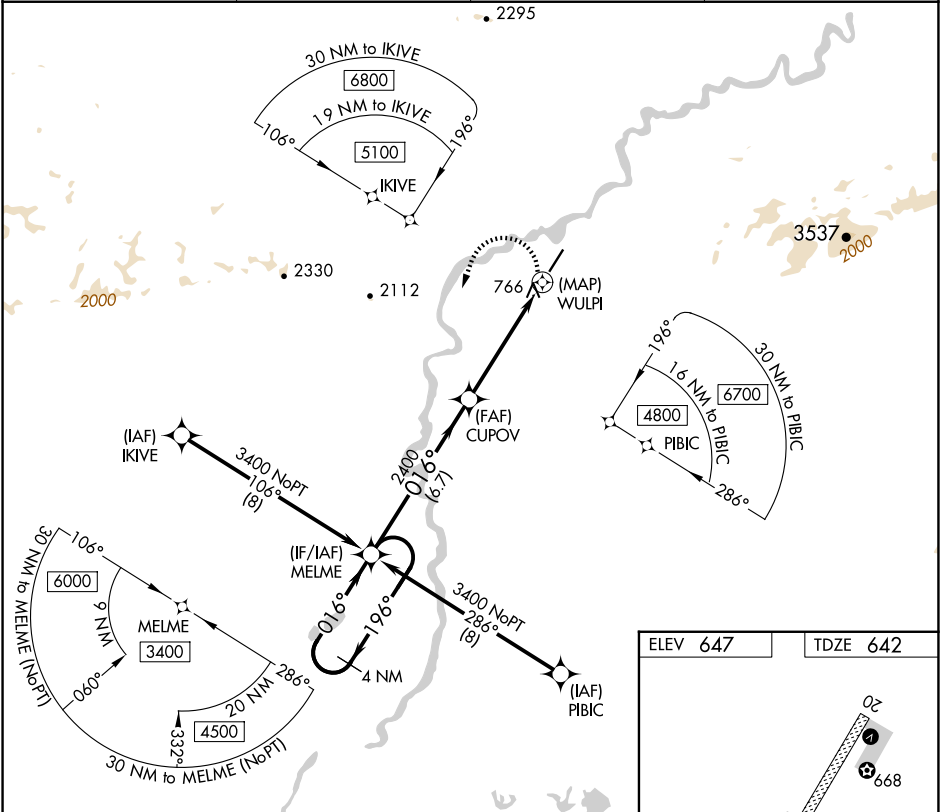


APP CRS	Rwy Idg	5190
016°	TDZE	642
	Apt Elev	647

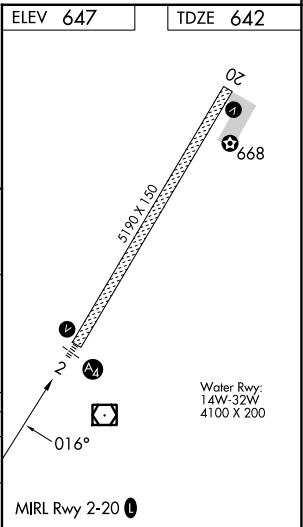
RNAV (GPS) RWY 2
BETTLES(BTT)(PABT)

RNP APCH.	Inoperative table does not apply. Circling NA east of Rwy 2-20. For inop ALS, increase Cat C/D visibility to 1 3/4 SM. Rwy 2 helicopter visibility reduction below 3/4 SM NA.	MALS A4	MISSED APPROACH: (Do not exceed 230K until MELME) Climb to 1800 then climbing left turn to 3400 direct MELME and hold.
-----------	--	------------	--

ASOS 135.45	ANCHORAGE CENTER 124.6 352.0	FAIRBANKS RADIO 122.2	CTAF 122.9 0
----------------	---------------------------------	--------------------------	-----------------



4 NM Holding Pattern	MELME	CUPOV	1800	3400	MELME
3400	196°	016°	016°	0.9 NM to WULPI	WULPI
		2400	3.00 TCH 36	0.5 NM	
		6.7 NM	4 NM	0.9	0.5
CATEGORY	A	B	C	D	
LNVA MDA	1100-1 458 (500-1)				
CIRCLING	1100-1 453 (500-1)		1320-2 673 (700-2)	1320-2 1/4 673 (700-2 1/4)	



AK, 12 JUN 2025 to 07 AUG 2025

AK, 12 JUN 2025 to 07 AUG 2025