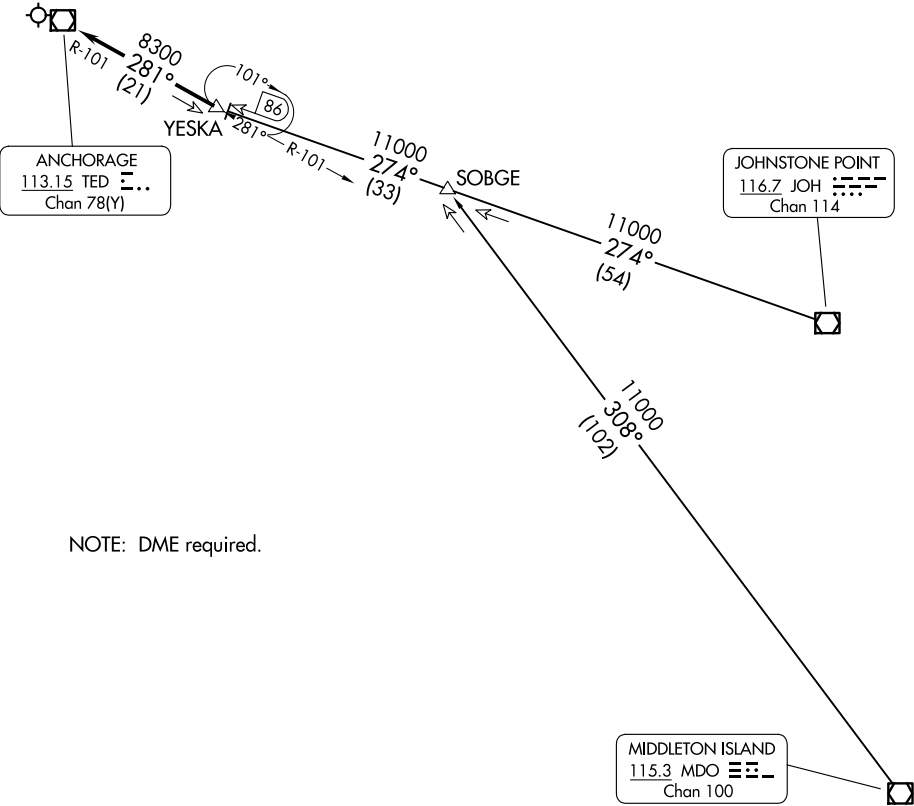


(YESKA.YESKA6) 24025  
YESKA SIX ARRIVAL

TED STEVENS ANCHORAGE INTL (ANC)(PANC)  
AL-1500 (FAA) ANCHORAGE, ALASKA

ANCHORAGE APP CON  
126.4 270.25  
ANC/PANC D-ATIS  
135.5  
MRI/PAMR ATIS  
124.25  
PAED ATIS ★  
124.3 273.5



ARRIVAL ROUTE DESCRIPTION

JOHNSTONE POINT TRANSITION (JOH.YESKA6): From over JOH VOR/DME on JOH R-274 to YESKA. Thence. . .  
MIDDLETON ISLAND TRANSITION (MDO.YESKA6): From over MDO VOR/DME on MDO R-308 to SOBGE, then on JOH R-274 to YESKA. Thence. . .  
. . . From over YESKA on TED R-101 to TED VOR/DME.  
Expect RADAR vectors to final approach course after YESKA.

YESKA SIX ARRIVAL  
(YESKA.YESKA6) 15OCT15

ANCHORAGE, ALASKA  
TED STEVENS ANCHORAGE INTL (ANC)(PANC)

AK, 12 JUN 2025 to 07 AUG 2025

AK, 12 JUN 2025 to 07 AUG 2025