

WAAS
CH **81815**
W07A

APP CRS
074°

Rwy Ldg **12400**
TDZE **132**
Apt Elev **151**

RNAV (GPS) Y RWY 7R

TED STEVENS ANCHORAGE INTL (ANC) (PANC)

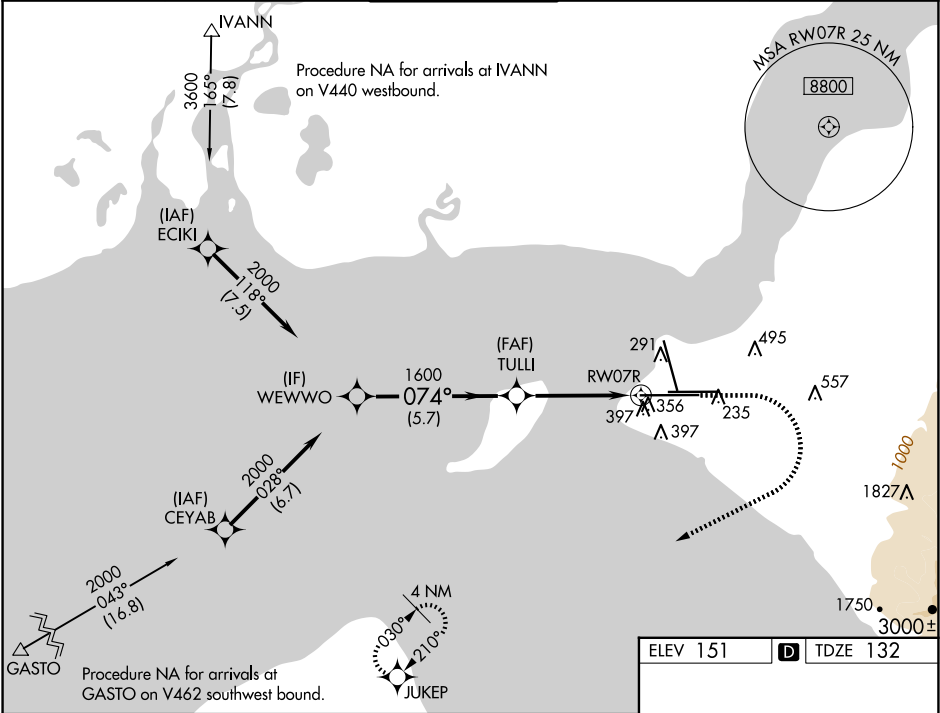
RNP APCH.
▼
▲
-21°C

For uncompensated Baro-VNAV systems, LNAV/VNAV NA below -18°C or above 54°C. For inop ALS, increase LNAV/VNAV all Cats and LNAV Cat C/D visibility to 1 3⁄8 SM.

ALSF-2
A

MISSED APPROACH: Climb to 900 then climbing right turn to 3000 direct JUKEP and hold.

D-ATIS 135.5	ANCHORAGE APP CON 118.6 290.5	ANCHORAGE TOWER 118.3 257.8	GND CON 121.9 338.25	CLNC DEL 119.4 323.1
------------------------	---	---------------------------------------	--------------------------------	--------------------------------



WEWWO

VGSI and RNAV glidepath not coincident (VGSI Angle 3.00/TCH 72).

900 3000 JUKEP

2000 074° 1600

GP 3.00° TCH 55

5.7 NM 3.1 NM 1.3 NM

*1.3 NM to RW07R

*LNAV only

CATEGORY	A	B	C	D
LPV DA	332/18		200 (200-½)	
LNAV/VNAV DA	648/55		516 (500-1)	
LNAV MDA	620/24	488 (500-½)	620/50	488 (500-1)
CIRCLING	700-1	549 (600-1)	800-1¾ 649 (700-1¾)	920-2½ 769 (800-2½)

074°

12400 X 200

10865 X 200

10600 X 150

0.4% DOWN

0.4% UP

TWR

REIL Rwy 33

TDZ/CL Rwy 7L and 7R

HIRL all Rwy