

APP CRS
074°

Rwy Ldg
12400

TDZE
132

Apt Elev
151

RNAV (RNP) Z RWY 7R

TED STEVENS ANCHORAGE INTL (ANC) (PANC)

RNP AR APCH, RF required.

Missed approach requires RNP less than 1.0.

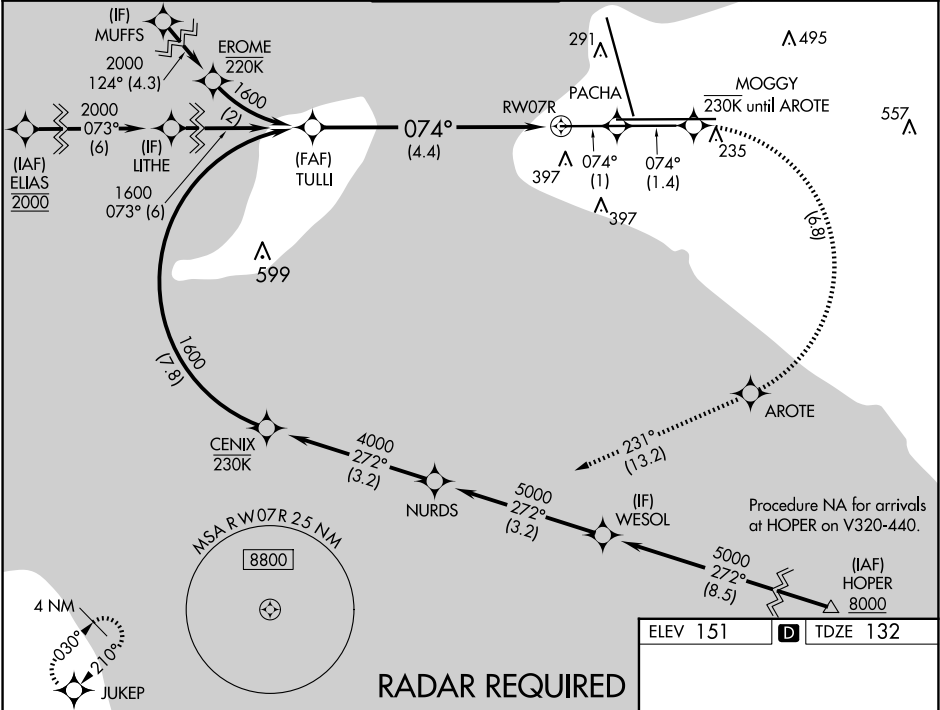
For uncompensated Baro-VNAV systems, procedure NA below -18°C (0°F) or above 54°C (130°F).

For inop ALS, increase RNP 0.30 all Cats visibility to 1½ SM.

ALSF-2

MISSED APPROACH: Climb to 3000 on the missed approach route to JUKEP and hold.

D-ATIS 135.5	ANCHORAGE APP CON 118.6 290.5	ANCHORAGE TOWER 118.3 257.8	GND CON 121.9 338.25	CLNC DEL 119.4 323.1
-----------------	----------------------------------	--------------------------------	-------------------------	-------------------------



3000
↑
tr 074°

PACHA
tr 074°

MOGGY

AROTE

tr 231°

JUKEP

TULLI
1600

1600

074°

RW07R

GP 3.00°
TCH 55

See planview for multiple IF locations.

4.4 NM

CATEGORY

A

B

C

D

RNP 0.30 DA

562/50 430 (500-1)

AUTHORIZATION REQUIRED

REIL Rwy 33

TDZ/CL Rws 7L and 7R

HIRL all Rws