

WAAS
CH **86215**
W07B

APP CRS
074°

Rwy Ldg **10600**
TDZE **128**
Apt Elev **151**

RNAV (GPS) RWY 7L

TED STEVENS ANCHORAGE INTL (ANC) (PANC)

RNP APCH.
⚠
⚠
-21°C

For uncompensated Baro-VNAV systems, LNAV/VNAV NA below -18°C or above 54°C. For inop ALS, increase LNAV/VNAV all Cats and LNAV Cat C/D visibility to 1½ SM.

MALSR
⚠

MISSED APPROACH: Climb to 800 then climbing right turn to 3000 direct JUKEP and hold.

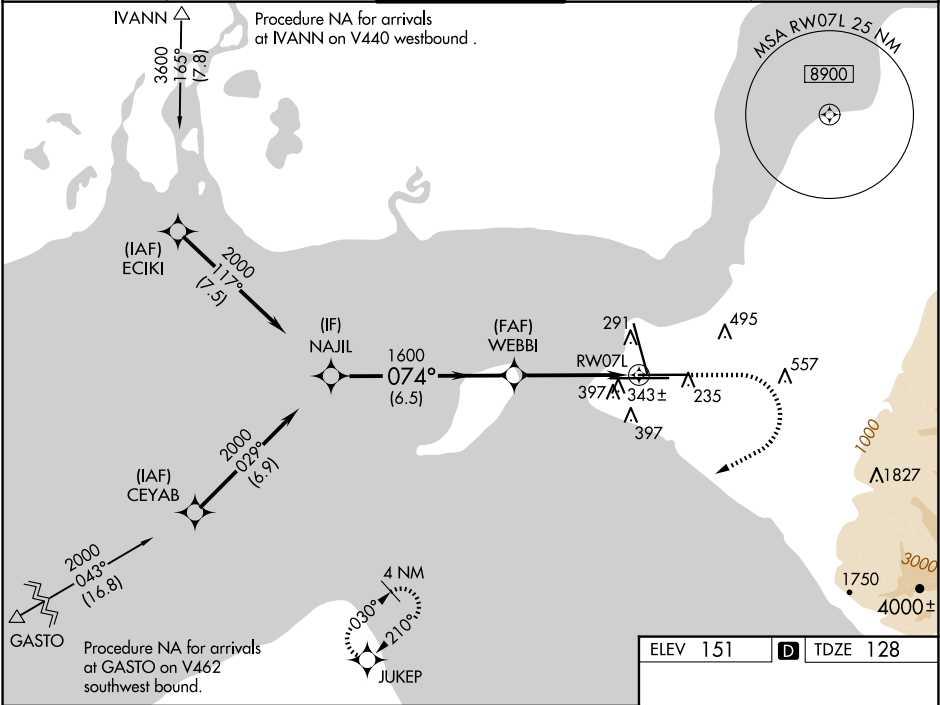
D-ATIS
135.5

ANCHORAGE APP CON
118.6 290.5

ANCHORAGE TOWER
118.3 257.8

GND CON
121.9 338.25

CLNC DEL
119.4 323.1



NAJIL 2000

VGSI and RNAV glidepath not coincident (VGSI Angle 3.00/TCH 63).

WEBBI 1600

800 3000 JUKEP

GP 3.00° TCH 54

074°

1600

* 1.3 NM to RW07L

RW07L

* LNAV only

6.5 NM 3.2 NM 1.3 NM

CATEGORY	A	B	C	D
LPV DA	328/18		200 (200-½)	
LNAV/VNAV DA	595/50		467 (500-1)	
LNAV MDA	600/24 472 (500-½)		600/50 472 (500-1)	
CIRCLING	700-1 549 (600-1)		800-1¾ 920-2½ 649 (700-1¾) 769 (800-2½)	

ELEV 151 D TDZE 128

REIL Rwy 33
TDZ/CL Rwsy 7L and 7R
HIRL all Rwsy