

## NEELL SEVEN ARRIVAL (RNAV)

TED STEVENS ANCHORAGE INTL (ANC)(PANC)  
AL-1500 (FAA) ANCHORAGE, ALASKA

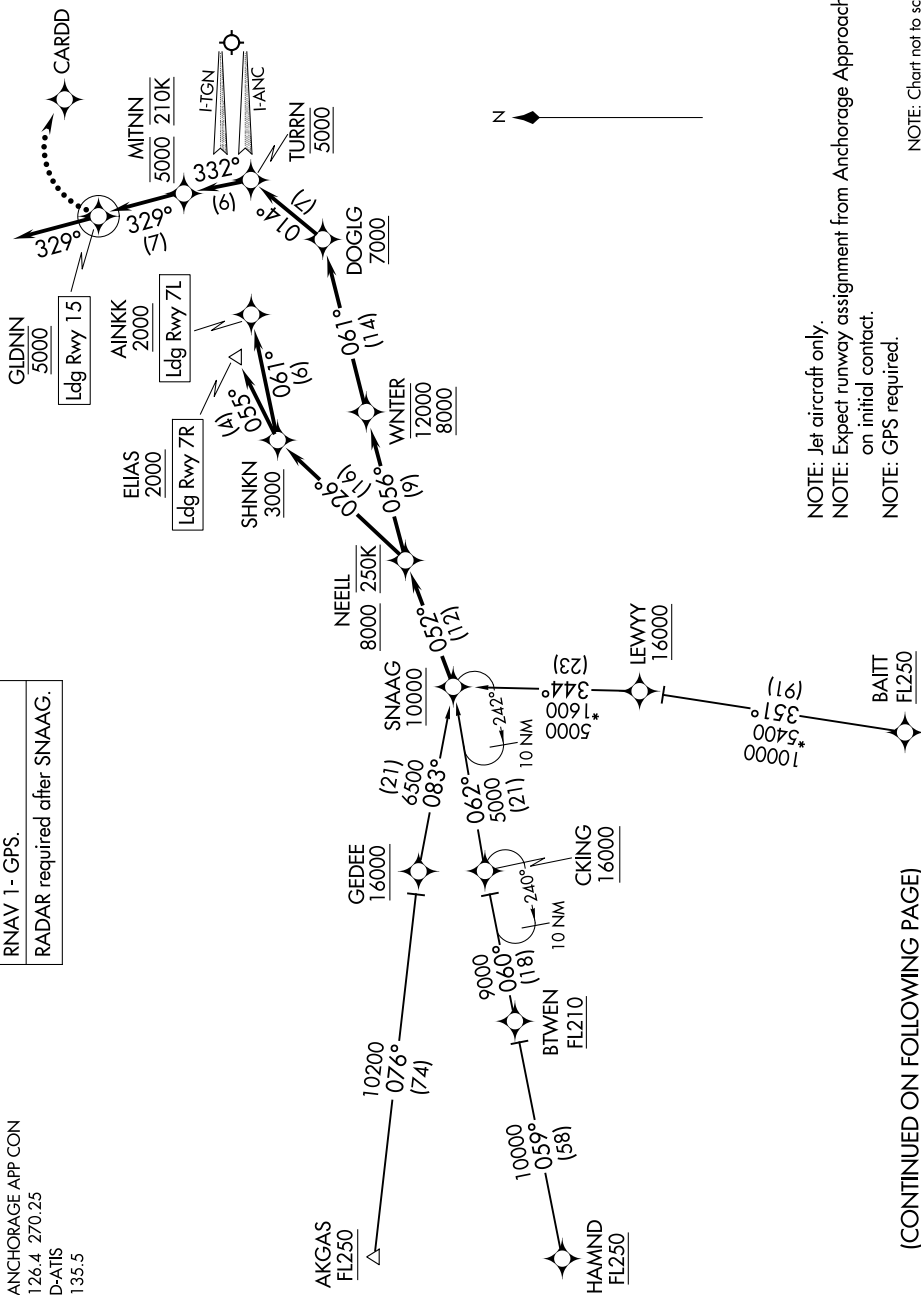
AK, 12 JUN 2025 to 07 AUG 2025

RNAV 1 - GPS.
RADAR required after SNAAG.

ANCHORAGE APP CON  
126.4 270.25  
D-ATIS  
135.5

NEELL SEVEN ARRIVAL (RNAV)  
(SNAAG.NEELL7) 31OCT24

ANCHORAGE, ALASKA  
TED STEVENS ANCHORAGE INTL (ANC)(PANC)



NOTE: Jet aircraft only.  
NOTE: Expect runway assignment from Anchorage Approach on initial contact.  
NOTE: GPS required.

NOTE: Chart not to scale.

(CONTINUED ON FOLLOWING PAGE)

AK, 12 JUN 2025 to 07 AUG 2025