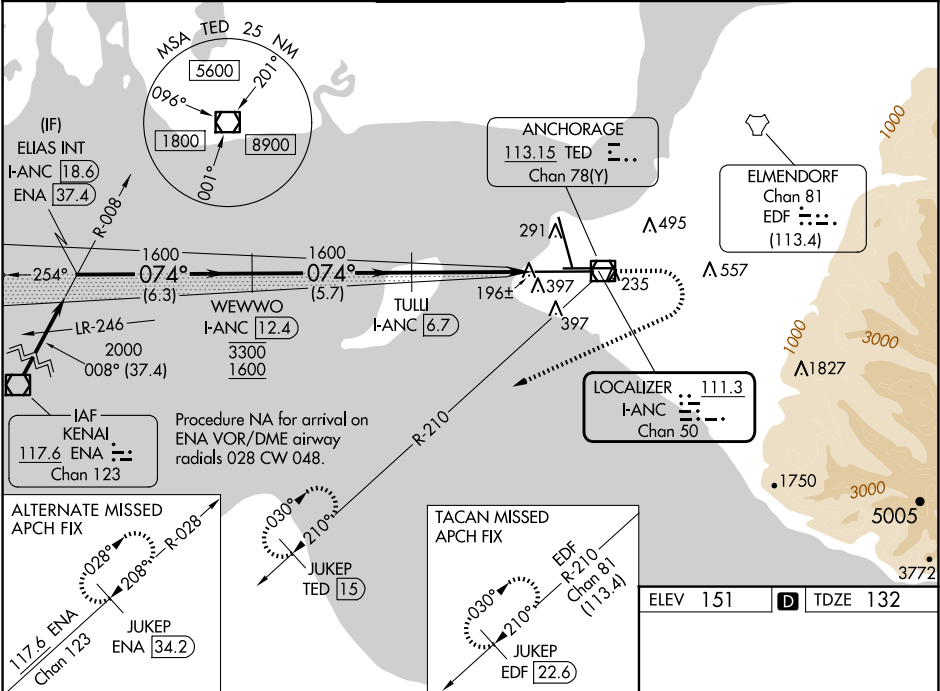


LOC/DME I-ANC <b>111.3</b> Chan <b>50</b>	APP CRS <b>074°</b>	Rwy Ldg TDZE <b>12400</b> <b>132</b> Apt Elev <b>151</b>
---	------------------------	--

ILS RWY 7R (CAT II & III)  
TED STEVENS ANCHORAGE INTL (ANC) (PANC)

DME required. CAT II: RVR 1000 authorized with specific OPSPEC, MSPEC, or LOA approval and use of autoland or HUD to touchdown. Rwy 7L threshold 6140 feet east of Rwy 7R threshold.	ALSIF-2	MISSED APPROACH: Climb to 780 then climbing right turn to 3000 on heading 230° and on TED VOR/DME R-210 to JUKEP/TED 15 DME and hold. (TACAN aircraft climb to 780 then climbing right turn to 3000 on heading 230° and EDF TACAN R-210 to JUKEP/EDF 22.6 DME and hold).
--	---------	--

D-ATIS <b>135.5</b>	ANCHORAGE APP CON <b>118.6 290.5</b>	ANCHORAGE TOWER <b>118.3 257.8</b>	GND CON <b>121.9 338.25</b>	CLNC DEL <b>119.4 323.1</b>
------------------------	---	---------------------------------------	--------------------------------	--------------------------------



ELIAS INT I-ANC 18.6	WEWWO I-ANC 12.4	TULLI I-ANC 6.7	JUKEP TED 15
2000	3300 1600	1600	780 3000
GS 3.00° TCH 55	6.3 NM	5.7 NM	4.4 NM
CATEGORY	A	B	C
S-ILS 7R	CAT II RA 115/12 100 DA 232		
S-ILS 7R	CAT III RVR 06		

CATEGORY II & III ILS - SPECIAL AIRCREW  
& AIRCRAFT CERTIFICATION REQUIRED

