

TOP ALTITUDE:
10000

FFITZ FOUR DE
FFITZ4.FFITZ) 01FEB

DEPARTURE ROUTE DESCRIPTION

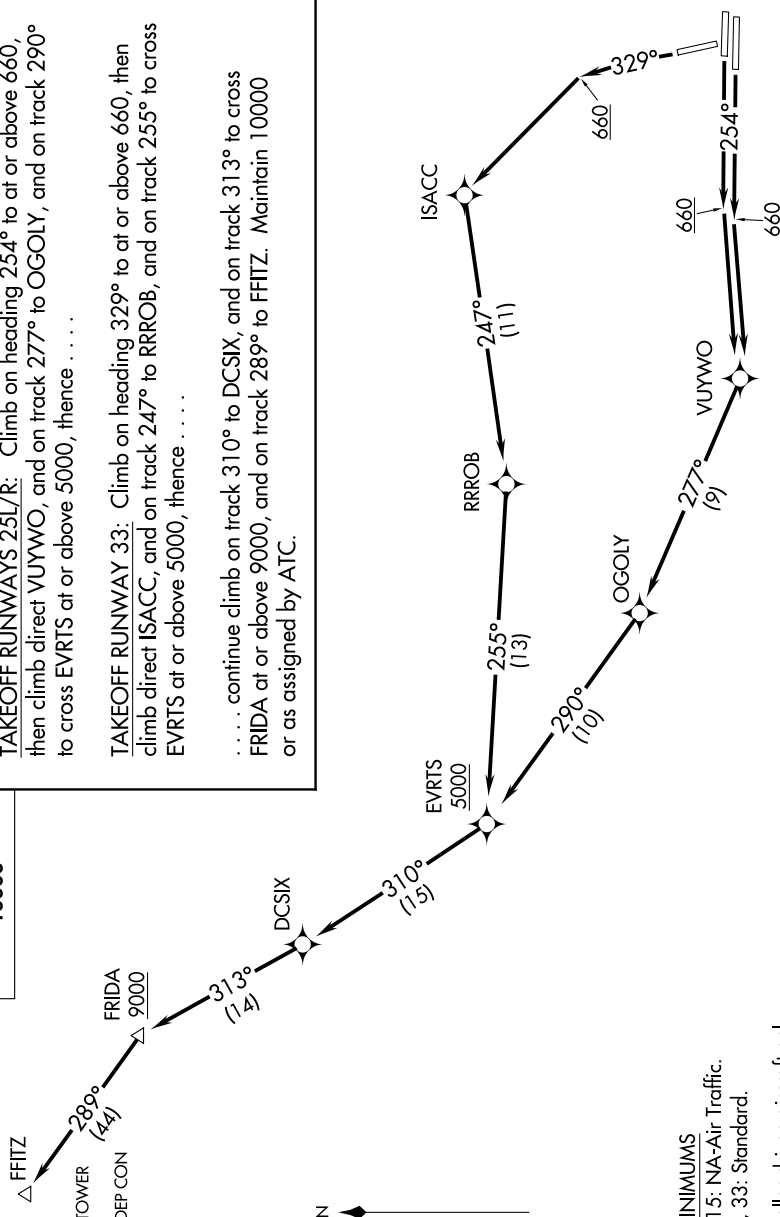
TAKEOFF RUNWAYS 25L/R: Climb on heading 254° to at or above 660, then climb direct VUYWO, and on track 277° to OGOLY, and on track 290° to cross EVRTS at or above 5000, thence

TAKEOFF RUNWAY 33: Climb on heading 329° to at or above 660, then climb direct ISACC, and on track 247° to RR0B, and on track 255° to cross EVRTS at or above 5000, thence. . . .

... continue climb on track 310° to DC5IX, and on track 313° to cross FRIDA at or above 9000, and on track 289° to FFHTZ. Maintain 10000 or as assigned by ATC.

TAKEOFF MINIMUMS
Rwy 7L/R, 15: NA-Air Traffic.
Rwy 25L/R, 33: Standard.

NOTE: Propeller-driven aircraft only.
NOTE: GPS required.
NOTE: RADAR required.
NOTE: RNAV-1.



FFITZ FOUR DEPARTURE (RNAV)

ANCHORAGE, ALASKA
TED STEVENS ANCHORAGE INTL (ANC) (PANC)

ANCHORAGE, ALASKA