

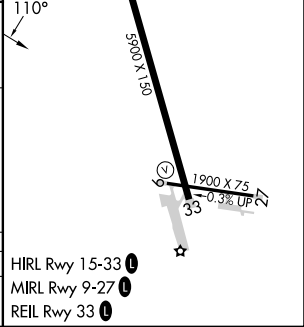
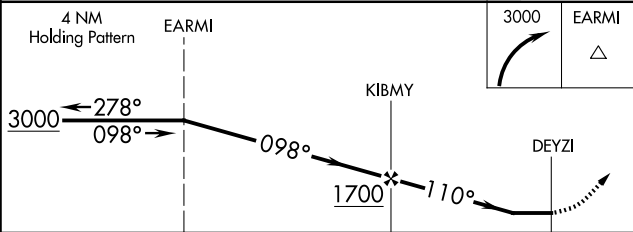
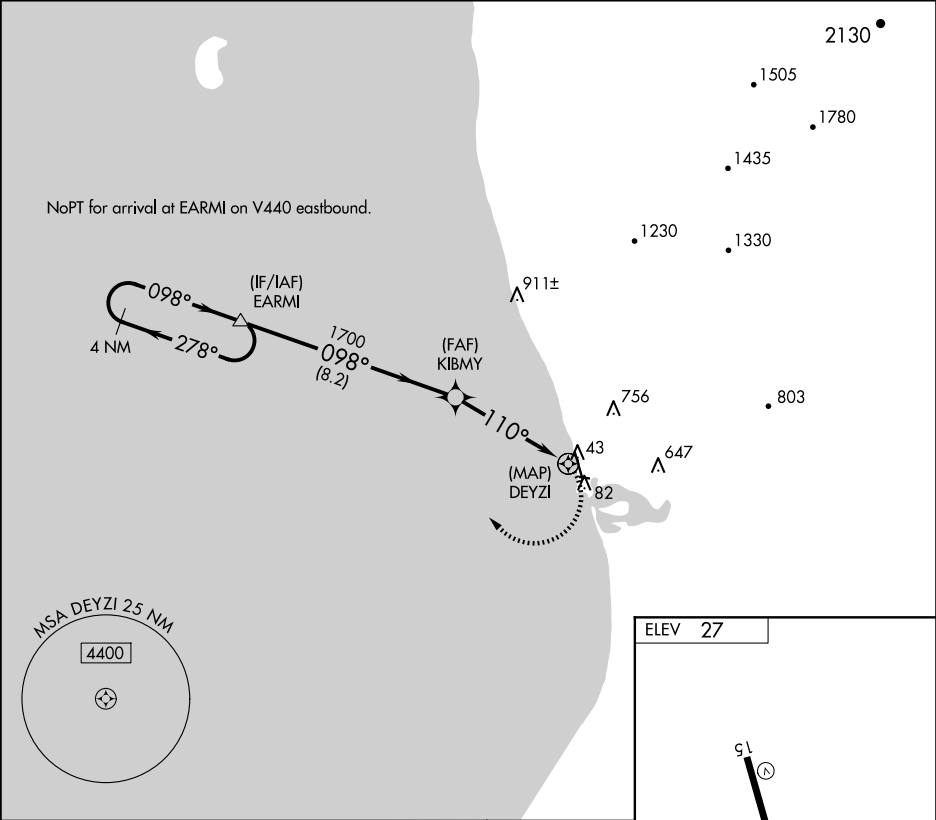
APP CRS 110°	Rwy Idg TDZE Apt Elev	N/A N/A 27
-----------------	-----------------------------	------------------

RNAV (GPS)-A

UNALAKLEET (UNK)(PAUN)

<div><div>▼</div><div>▲</div></div> <div>Circling to Rwy 9 NA at night. Circling NA east of Rwy 15-33. DME/DME RNP-0.3 NA.</div>	MISSED APPROACH: Climbing right turn to 3000 direct EARMI and hold.
--	--

AWOS-3P 132.25	ANCHORAGE CENTER 135.7 335.5	NOME RADIO 122.3	CTAF 123.0 0
-------------------	---------------------------------	---------------------	-----------------



CATEGORY	A	B	C	D	
CIRCLING	400-1 373 (400-1)	700-1 673 (700-1)	700-2 673 (700-2)	860-2¾ 833 (900-2¾)	HIRL Rwy 15-33 0 MIRL Rwy 9-27 0 REIL Rwy 33 0

AK, 12 JUN 2025 to 07 AUG 2025

AK, 12 JUN 2025 to 07 AUG 2025