

APP CRS
348°

Rwy Idg
TDZE
Apt Elev

5900
25
27

RNAV (GPS) RWY 33
UNALAKLEET (UNK)(PAUN)

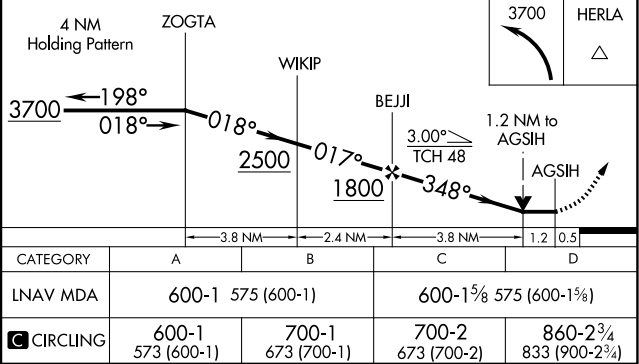
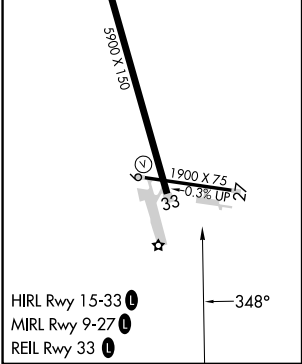
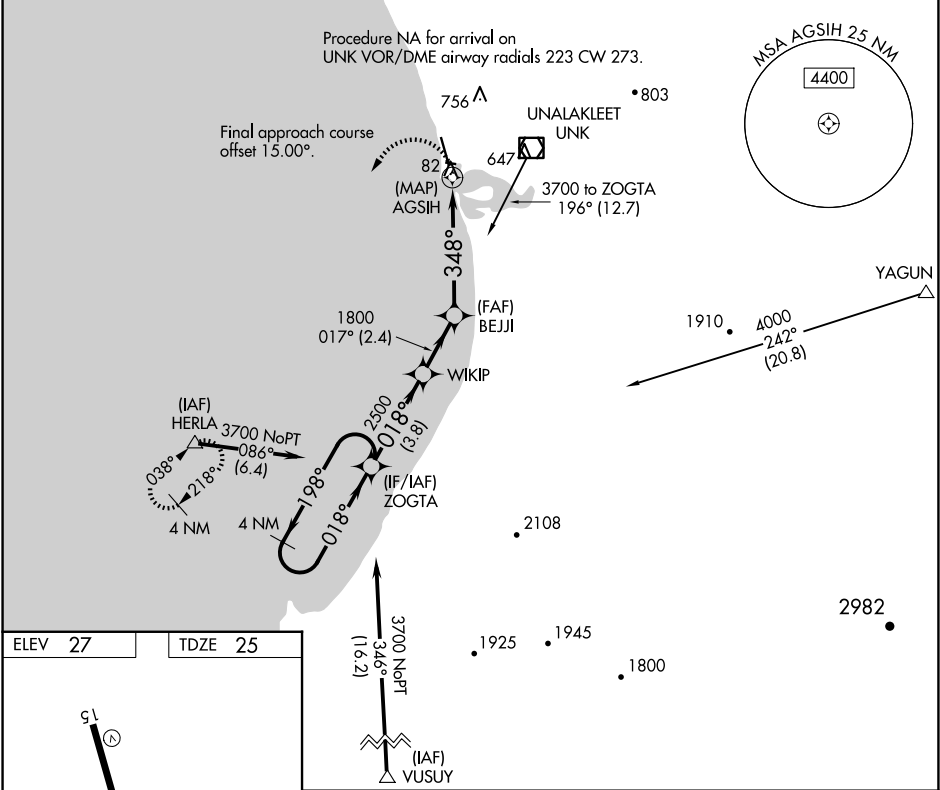
▼

▲

Circling NA east of Rwy 15-33. Circling Rwy 9 NA at night.
Rwy 33 helicopter visibility reduction below ¾ SM NA.
DME/DME RNP-0.3 NA.

MISSED APPROACH:
Climbing left turn to 3700
direct HERLA and hold,
continue climb-in-hold to 3700.

AWOS-3P 132.25	ANCHORAGE CENTER 135.7 335.5	NOME RADIO 122.3	CTAF 123.00
-------------------	---------------------------------	---------------------	----------------



AK, 12 JUN 2025 to 07 AUG 2025

AK, 12 JUN 2025 to 07 AUG 2025