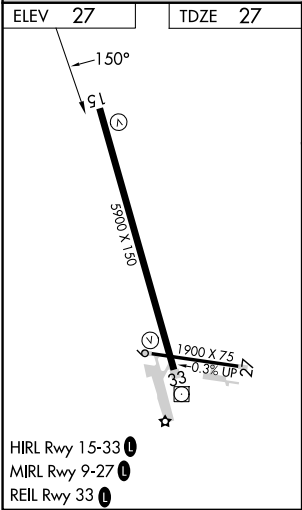
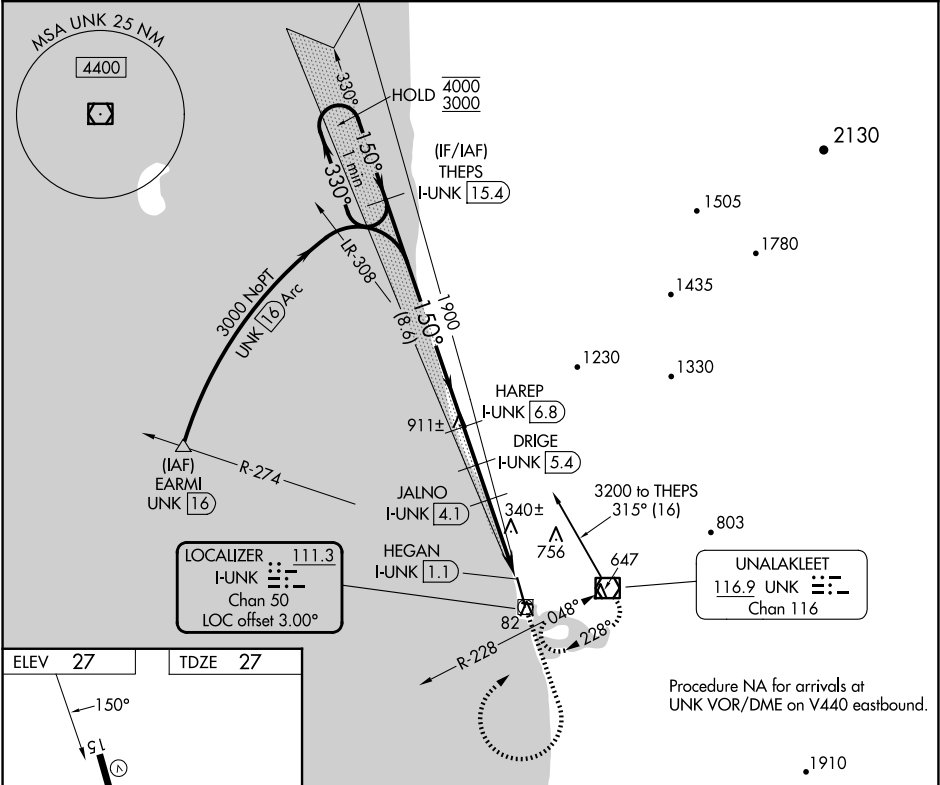


LOC/DME I-UNK	APP CRS	Rwy Idg	5900
111.3	150°	TDZE	27
Chan 50		Apt Elev	27

LOC RWY 15

UNALAKLEET(UNK)(PAUN)

DME required.		MISSED APPROACH: Climb to 1900 then climbing right turn to 3400 direct UNK VOR/DME and hold, continue climb-in-hold to 3400.	
Cirdling NA northeast of Rwy 15-33. Cirdling Rwy 9 NA at night. Cirdling Rwy 27 NA.			
AWOS-3P	ANCHORAGE CENTER	NOME RADIO	CTAF
132.25	135.7 335.5	122.3	123.0



<p>THEPS I-UNK 15.4</p> <p>One Minute Holding Pattern</p> <p>4000 ← 330° 3000 150° →</p>		<p>Use I-UNK DME when on the localizer course.</p> <p>HAREP I-UNK 6.8</p> <p>DRIGE I-UNK 5.4</p> <p>JALNO I-UNK 4.1</p> <p>I-UNK 2.5</p> <p>HEGAN I-UNK 1.1</p>		<p>1900 3400 UNK</p> <p>↑ ↗ ◻</p>
<p>150° 150° 3.01°</p> <p>1900 1440 1020</p> <p>8.6 NM 1.4 NM 1.3 NM 1.6 NM 1.4 NM</p>				
CATEGORY	A	B	C	D
S-LOC 15	520-1 493 (500-1)		520-1 ³ / ₈ 493 (500-1 ³ / ₈)	
CIRCLING	600-1 573 (600-1)	700-1 673 (700-1)	700-2 673 (700-2)	900-2 ³ / ₄ 873 (900-2 ³ / ₄)