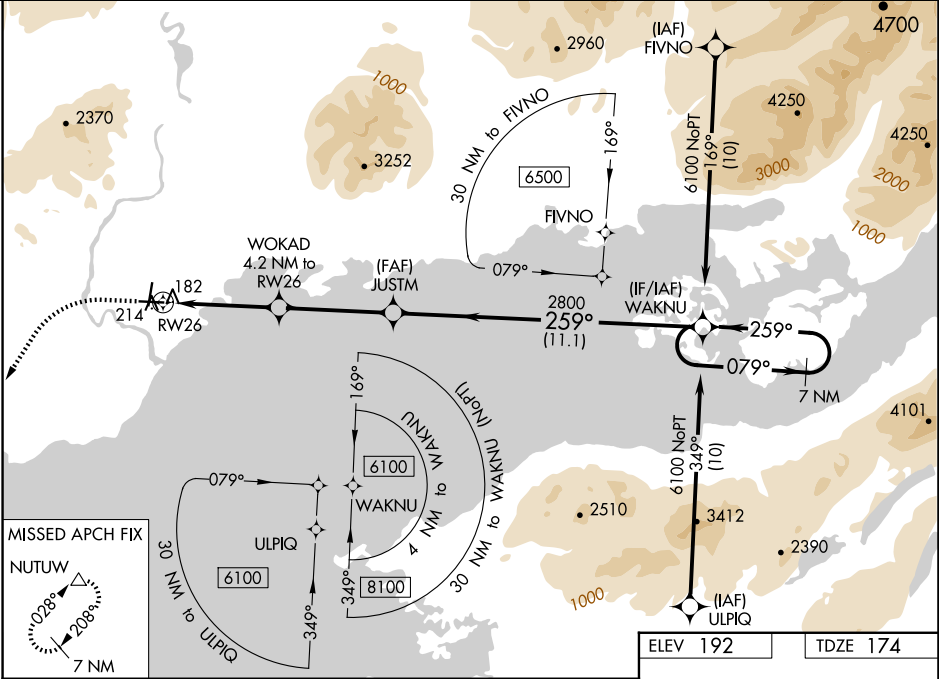


WAAS CH <b>45910</b> <b>W26A</b>	APP CRS <b>259°</b>	Rwy Idg TDZE <b>174</b> Apt Elev <b>192</b>
--	------------------------	---

RNAV (GPS) RWY 26

ILIAMNA (ILI) (PAIL)

RNP APCH - GPS.		MISSED APPROACH: Climb to 600, then climbing left turn to 7000 direct NUTUW and hold, continue climb-in-hold to 7000.
For uncompensated Baro-VNAV systems, procedure NA below -21°C or above 54°C. When local altimeter setting not received, procedure NA. Circling NA to waterways N, S, E, W.		
AFIS ★ <b>134.95</b>	ANCHORAGE CENTER <b>118.8</b>	ILIAMNA RADIO <b>123.6 (CTAF) 0</b>



MISSED APCH FIX NUTUW 028° 208° 7 NM		ELEV 192		TDZE 174	
600 7000 NUTUW △		WAKNU 7 NM Holding Pattern			
JUSTM WOKAD 4.2 NM to RW26 RW26 0.8 NM to RW26 1500 2800 259° 079° 6100 GP 3.00° TCH 35					
0.8 NM 3.3 NM 4.1 NM 11.1 NM					
CATEGORY	A	B	C	D	
LPV DA	424-1		250 (300-1)		
LNAV/VNAV DA	424-1		250 (300-1)		
LNAV MDA	440-1		266 (300-1)		
CIRCLING	740-1 548 (600-1)		820-1¾ 628 (700-1¾)		1700-3 1508 (1600-3)

