

VOR/DME or TACAN RWY 28

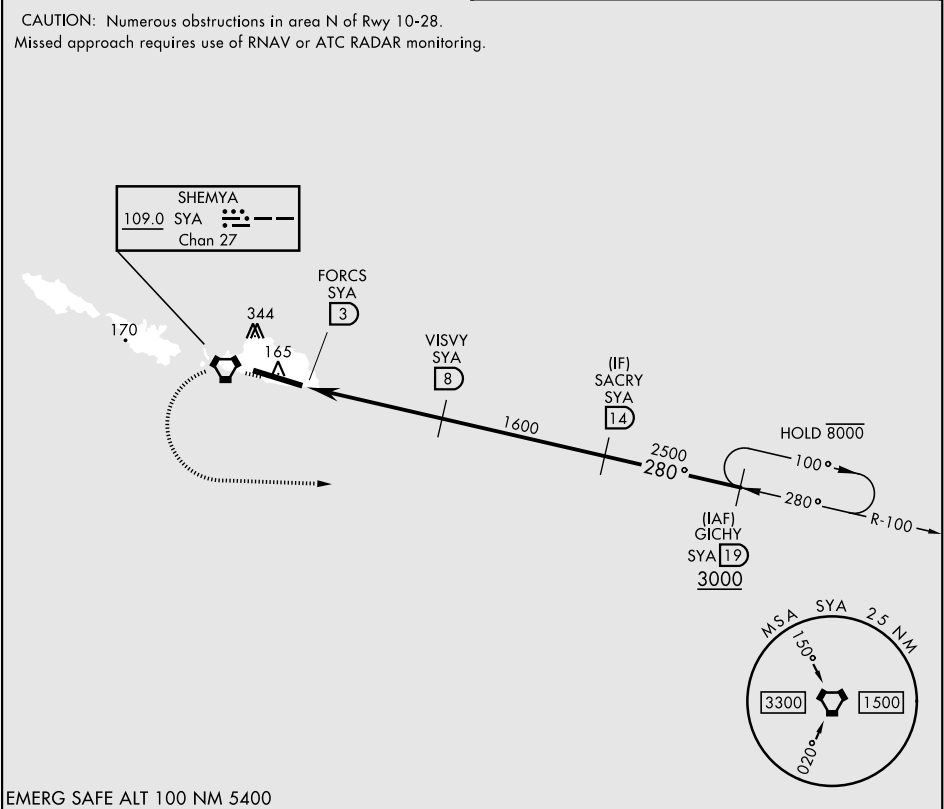
VORTAC SYA 109.0 Chan 27	APCH CRS 280°	Rwy Idg 10,004 TDZE 93 Arpt Elev 98
--------------------------------	------------------	---

[USAF]

EARECKSON AS (SYA) (PASY)

* When ALS inop, increase CAT CDE vis to 1½ miles. ** Circling not authorized N of Rwy 10-28.	SALS A2	MISSED APPROACH: Climbing left turn to 3000 direct GICHY and hold.
--	------------	---

ANCHORAGE CENTER 119.1 339.8	CTAF 127.2 352.05
---------------------------------	----------------------



EMERG SAFE ALT 100 NM 5400

3000 GICHY R-100 19	FORCS SYA 3	SYA 4.6	VISVY SYA 8	SACRY SYA 14	ELEV 98	TDZE 93
CATEGORY	A	B	C	D	E	
S-28 *	620-1	527 (600-1)	620-1¼	527 (600-1¼)		
CIRCLING **	620-1	522 (600-1)	620-1½ 522 (600-1½)	660-2 562 (600-2)	680-2 582 (600-2)	HIRL Rwy 10-28 REIL Rwy 10 and 28

VOR/DME or TACAN RWY 28