

VOR/DME or TACAN RWY 10

VORTAC SYA	APCH CRS	Rwy Idg
109.0	092°	10,004
Chan 27		TDZE 98
		Arpt Elev 98

[USAF]

EARECKSON AS (SYA) (PASY)

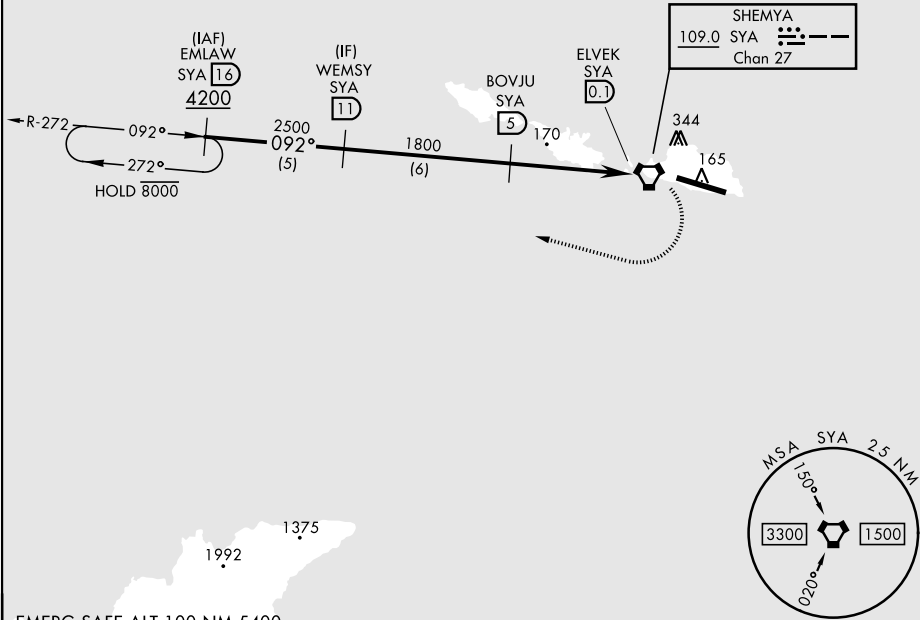
* When ALS inop, increase CAT AB vis to 1½ miles;
CAT CDE vis to 1¾ miles.
** Circling not authorized N of Rwy 10-28.



MISSED APPROACH: Climb to 1200, then climbing right turn to 4200, intercept SYA R-272 direct EMLAW and hold.

ANCHORAGE CENTER	CTAF
119.1 339.8	127.2 352.05

CAUTION: Numerous obstructions in area N of Rwy 10-28.
Missed approach requires use of RNAV or ATC RADAR monitoring.



EMERG SAFE ALT 100 NM 5400

					ELEV 98	TDZE 98
CATEGORY	A	B	C	D	E	
S-10 *	640-1	542 (600-1)	640-1½	542 (600-1½)		
CIRCLING **	640-1½	542 (600-1½)	640-1¾	562 (600-2)	680-2	HIRL Rwy 10-28 REIL Rwy 10 and 28

VOR/DME or TACAN RWY 10

AK, 12 JUN 2025 to 07 AUG 2025

AK, 12 JUN 2025 to 07 AUG 2025