

RNAV (GPS) RWY 28

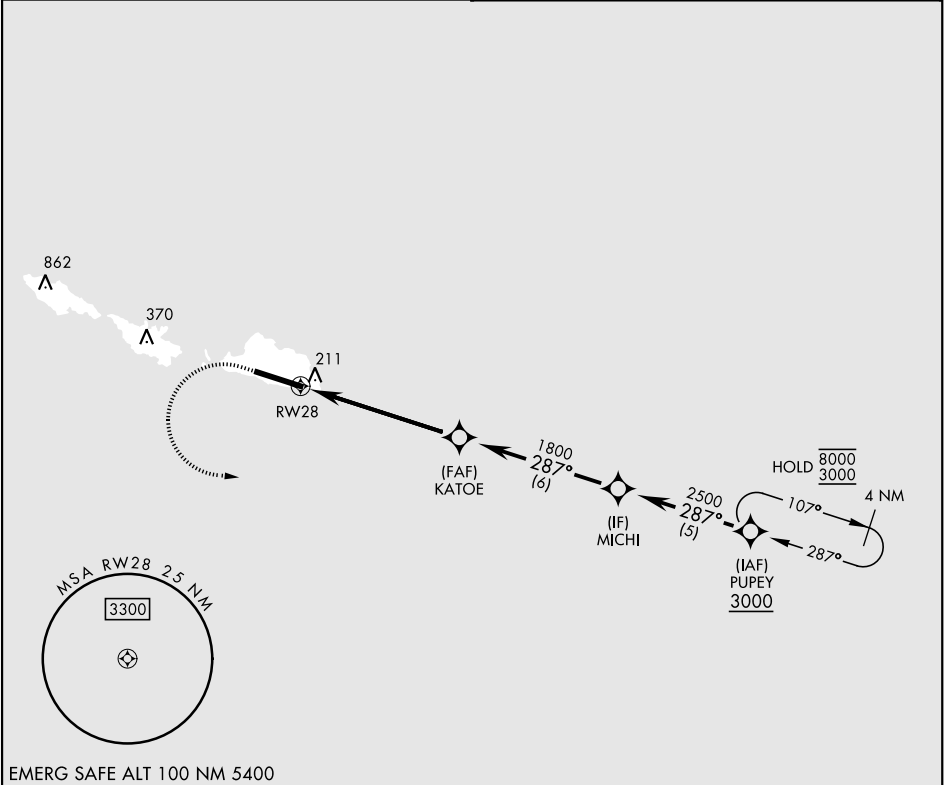
APCH CRS	Rwy Idg
287°	10,004
TDZE	93
Arpt Elev	98

[USAF]

EARECKSON AS (SYA) (PASY)

RNP APCH - GPS	SALS	MISSED APPROACH: Climb to 600, then climbing left turn to 3000, direct PUPEY and hold.
* When ALS inop, increase CAT CDE vis to 1½ miles. ** Circling not authorized N of Rwy 10-28.		

ANCHORAGE CENTER 119.1 339.8	CTAF 127.2 352.05
---------------------------------	-----------------------



EMERG SAFE ALT 100 NM 5400

600

↑

3000

↶

PUPEY

⬇

1.3 NM to RW28

↕

287°

↖

2500

↕

1800

↕

2500

↕

2500

↕

2500

↕

2500

↕

2500

↕

2500

↕

2500

↕

2500

↕

2500

↕

2500

↕

2500

↕

2500

↕

2500

↕

2500

↕

2500

↕

2500

↕

2500

↕

2500

↕

2500

↕

2500

↕

2500

↕

2500

↕

2500

↕

2500

↕

2500

↕

2500

↕

2500

↕

2500

↕

2500

↕

2500

↕

2500

↕

2500

↕

2500

↕

2500

↕

2500

↕

2500

↕

2500

↕

2500

↕

2500

↕

2500

↕

2500

↕

2500

↕

2500

↕

2500

↕

2500

↕

2500

↕

2500

↕

2500

↕

2500

↕

2500

↕

2500

↕

2500

↕

2500

↕

2500

↕

2500

↕

2500

↕

2500

↕

2500

↕

2500

↕

2500

↕

2500

↕

2500

↕

2500

↕

2500

↕

2500

↕

2500

↕

2500

↕

2500

↕

2500

↕

2500

↕

2500

↕

2500

↕

2500

↕

2500

↕

2500

↕

2500

↕

2500

↕

2500

↕

2500

↕

2500

↕

2500

↕

2500

↕

2500

↕

2500

↕

2500

↕

2500

↕

2500

↕

2500

↕

2500

↕

2500

↕

2500

↕

2500

↕

2500

↕

2500

↕

2500

↕

2500

↕

2500

↕

2500

↕

2500

↕

2500

↕

2500

↕

2500

↕

2500

↕

2500

↕

2500

↕

2500

↕

2500

↕

2500

↕

2500

↕

2500

↕

2500

↕

2500

↕

2500

↕

2500

↕

2500

↕

2500

↕

2500

↕

2500

↕

2500

↕

2500

↕

2500

↕

2500

↕

2500

↕

2500

↕

2500

↕

2500

↕

2500

↕

2500

↕

2500

↕

2500

↕

2500

↕

2500

↕

2500

↕

2500

↕

2500

↕

2500

↕

2500

↕

2500

↕

2500

↕

2500

↕

2500

↕

2500

↕

2500

↕

2500

↕

2500

↕

2500

↕

2500

↕

2500

↕

2500

↕

2500

↕

2500

↕

2500

↕

2500

↕

2500

↕

2500

↕

2500

↕

2500

↕

2500

↕

2500

↕

2500

↕

2500

↕

2500

↕

2500

↕

2500

↕

2500

↕

2500

↕

2500

↕

2500

↕

2500

↕

2500

↕

2500

↕

2500

↕

2500

↕

2500

↕

2500

↕

2500

↕

2500

↕

2500

↕

2500

↕

2500

↕

2500

↕

2500

↕

2500

↕

2500

↕

2500

↕

2500

↕

2500

↕

2500

↕

2500

↕

2500

↕

2500

↕

2500

↕

2500

↕

2500

↕

2500

↕

2500

↕

2500

↕

2500

↕

2500

↕

2500

↕

2500

↕

2500

↕

2500

↕

2500

↕

2500

↕

2500

↕

2500

↕

2500

↕

2500

↕

2500

↕

2500

↕

2500

↕

2500

↕

2500

↕

2500

↕

2500

↕

2500

↕

2500

↕

2500

↕

2500

↕

2500

↕

2500

↕

2500

↕

2500

↕

2500

↕

2500

↕

2500

↕

2500

↕

2500

↕

2500

↕

2500

↕

2500

↕

2500

↕

2500

↕

2500

↕

2500

↕

2500

↕

2500

↕

2500

↕

2500

↕

2500

↕

2500

↕

2500

↕

2500

↕

2500

↕

2500

↕

2500

↕

2500

↕

2500

↕

2500

↕

2500

↕

2500

↕

2500

↕

2500

↕

2500

↕

2500

↕

2500

↕

2500

↕

2500

↕

2500

↕

2500

↕

2500

↕

2500

↕

2500

↕

2500

↕

2500

↕

2500

↕

2500

↕

2500

↕

2500

↕

2500

↕

2500

↕

2500

↕

2500

↕

2500

↕

2500

↕

2500

↕

2500

↕

2500

↕

2500

↕

2500

↕

2500

↕

2500

↕

2500

↕

2500

↕

RNAV (GPS) RWY 28