

RNAV (GPS) RWY 10

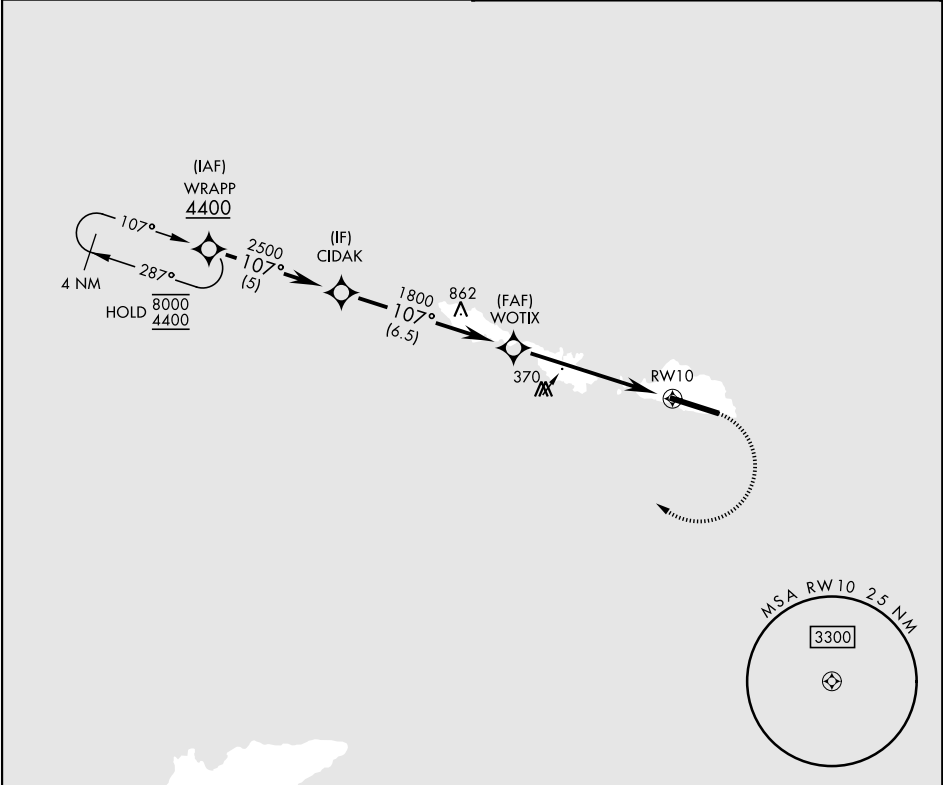
APCH CRS	Rwy Idg
107°	10,004
TDZE	98
Arpt Elev	98

[USAF]

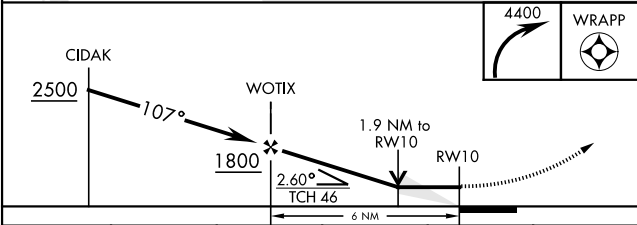
EARECKSON AS (SYA) (PASY)

RNP APCH - GPS	ALSF-1	MISSED APPROACH: Climbing right turn to 4400 direct WRAPP and hold, continue climb-in-hold to 4400.
*When ALS inop, increase CAT CDE vis to 1½ miles. **Circling not authorized N of Rwy 10-28.		

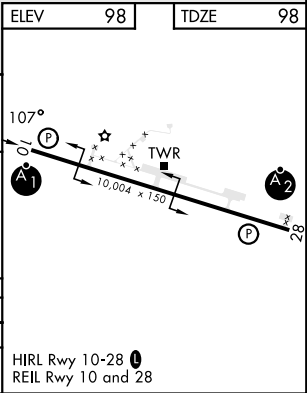
ANCHORAGE CENTER 119.1 339.8	CTAF 127.2 352.05
---------------------------------	----------------------



ELEV 98	TDZE 98
EMERG SAFE ALT 100 NM 5400	



CATEGORY	A	B	C	D	E
LNAV MDA *	640-1	542 (600-1)	640-1½	542 (600-1½)	
CIRCLING **	640-1	542 (600-1)	640-1½	542 (600-1½)	582 (600-2)



RNAV (GPS) RWY 10

AK, 12 JUN 2025 to 07 AUG 2025

AK, 12 JUN 2025 to 07 AUG 2025