

ILS or LOC/DME RWY 28

LOC I-SYA <b>110.1</b>	APCH CRS <b>287°</b>	Rwy Idg <b>10,004</b> TDZE <b>93</b> Arpt Elev <b>98</b>
---------------------------	-------------------------	--

[USAF]

EARECKSON AS (SYA) (PASY)

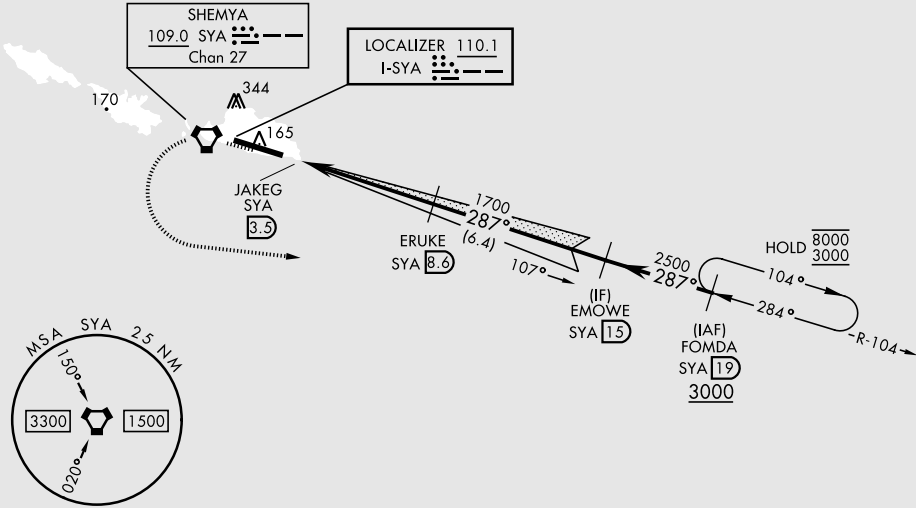
\* Circling not authorized N of Rwy 10-28.



MISSED APPROACH: Climb to 600, then climbing left turn to 3000 direct FOMDA and hold.

ANCHORAGE CENTER <b>119.1 339.8</b>	CTAF <b>127.2 352.05</b>
--	-----------------------------

CAUTION: Numerous obstructions in area N of Rwy 10-28.  
Missed approach requires use of RNAV or ATC RADAR monitoring.



EMERG SAFE ALT 100 NM 5400

600

3000

FOMDA SYA 19

VGSI and ILS glidepath not coincident (VGSI Angle 2.50/TCH 46).

ERUKE SYA 8.6

EMOWE SYA 15

FOMDA SYA 19

CATEGORY	A	B	C	D	E
S-ILS 28	293-1		200	(200-1)	
S-LOC 28	460-1		367	(400-1)	
CIRCLING*	460-1 362 (400-1)	560-1 462 (500-1)	560-1 1/2 465 (500-1 1/2)	660-2 562 (600-2)	680-2 582 (600-2)

ELEV 98

TDZE 93

ILS or LOC/DME RWY 28

AK, 12 JUN 2025 to 07 AUG 2025

AK, 12 JUN 2025 to 07 AUG 2025