

TACAN BER Chan <b>77</b> <b>(113.0)</b>	APP CRS <b>233°</b>	Rwy ldg <b>6190</b> TDZE <b>17</b> Apt Elev <b>20</b>
---	------------------------	---

TACAN RWY 23  
ADAK (ADK)(PADK)

**V** Circling NA northwest of Rwy 5-23. Rwy 23 helicopter visibility reduction below RVR 5000 NA. Straight-in Rwy 23 at night, operational VGSI required, remain on or above VGSI glidepath until threshold.

**A** USAF only: When VGSI inop, Straight-in Rwy 23 authorized at night with command approval.

Circling NA at night - unlit terrain 21 feet MSL 200 feet from threshold, 551 feet right of centerline. For inop ALS, increase 5-23\* Cat C/D/E visibility to 2½ SM.

MALS

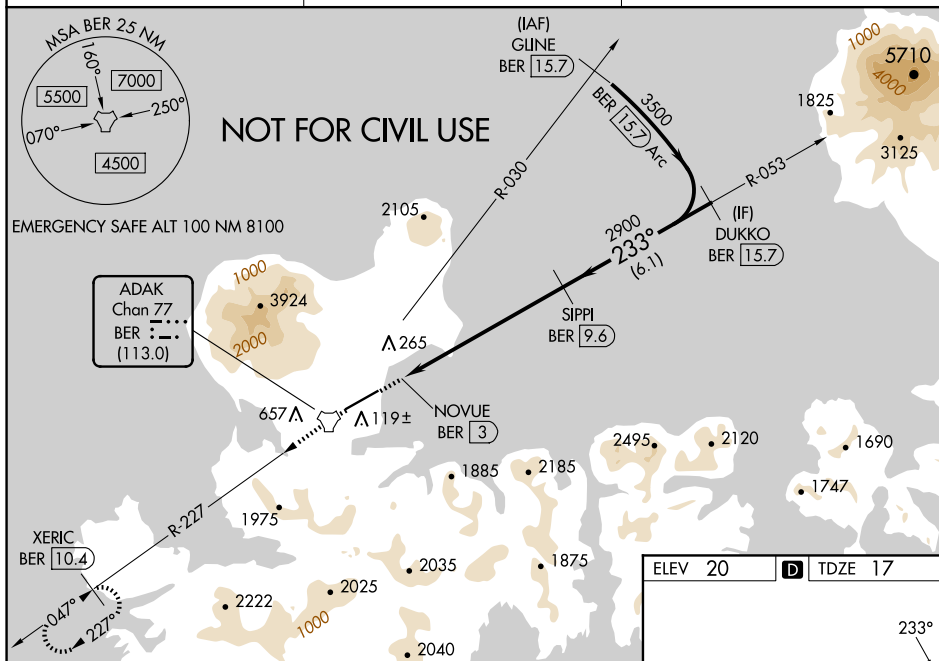
**MISSED APPROACH:** Climb to 4300 direct BER TACAN and continue on BER R-227 direct XERIC/BER 10.4 DME and hold, continue climb-in-hold to 4300.

\*Missed approach requires minimum climb of 375 feet per NM to 2800.

AWOS-3P  
134.5

ANCHORAGE CENTER  
126.4 254.3

CTAF  
122.9 



NOT FOR CIVIL USE

EMERGENCY SAFE ALT 100 NM 8100

ADAK  
Chan 77  
BER :  
(113.0)

CATEGORY	A	B	C	D	E
S-23*	800/50	783 (800-1)	800-2	783 (800-2)	
S-23	1620-1¼ 1603 (1600-1¼)	1620-1½ 1603 (1600-1½)	1620-3	1603 (1600-3)	
<b>C</b> CIRCLING	1620-1¼ 1600 (1600-1¼)	1620-1½ 1600 (1600-1½)	1620-3 1600 (1600-3)	2440-3	2420 (2500-3)

