

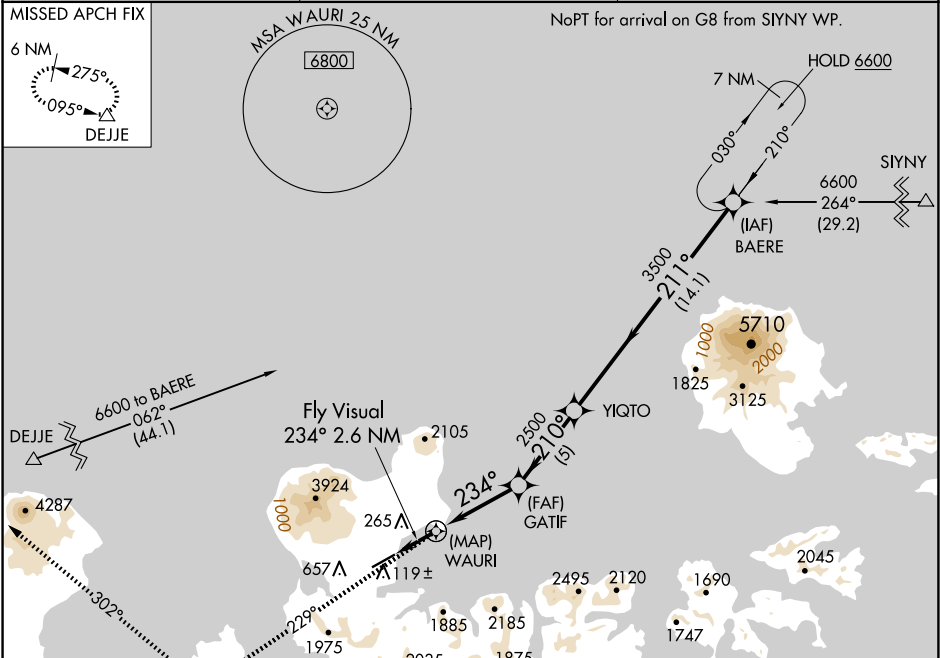
APP CRS	Rwy Idg	6190
234°	TDZE	17
	Apt Elev	20

RNAV (GPS) RWY 23

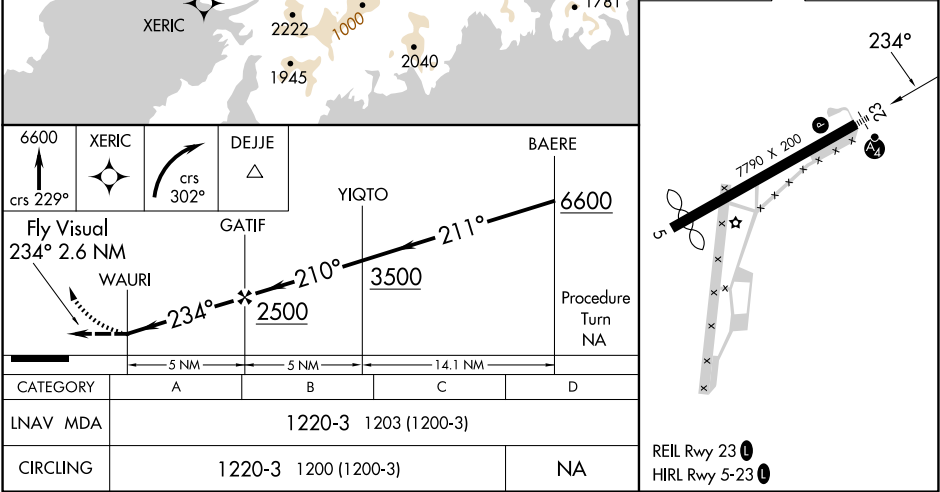
ADAK (ADK)(PADK)

RNP APCH-GPS.	MALS	MISSED APPROACH: Climb to 6600 on course 229° to XERIC, and right turn on course 302° to DEJJE and hold.
⚠ ⚠	⚠ ⚠	
Circling not authorized at night. Circling NA northwest of Rwy 5-23.		

AWOS-3P 134.5	ANCHORAGE CENTER 126.4 254.3	CTAF 122.9 0
------------------	---------------------------------	-----------------



ELEV 20	TDZE 17
---------	---------



AK, 12 JUN 2025 to 07 AUG 2025

AK, 12 JUN 2025 to 07 AUG 2025