




ADAK ISLAND, ALASKA

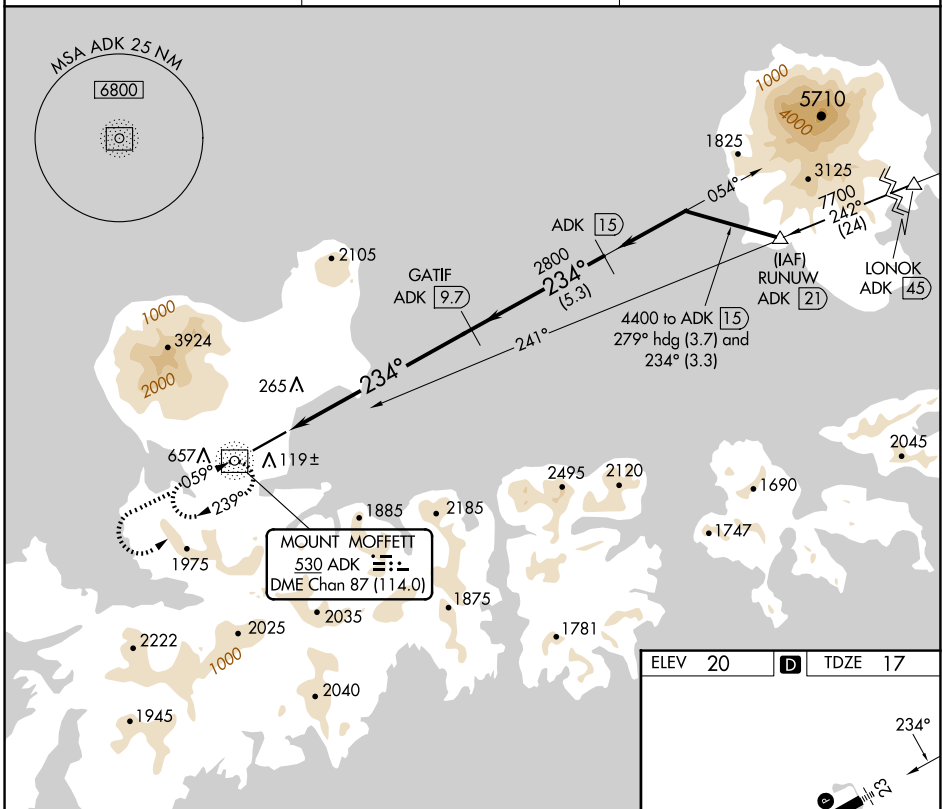
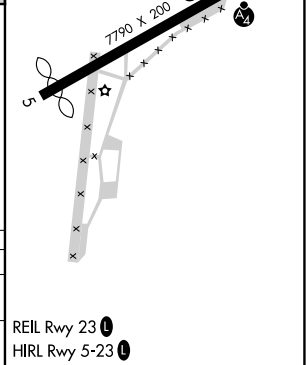
AL-1244 (FAA)

24361

NDB/DME ADK 530 Chan 87 (114.0)	APP CRS 234°	Rwy Idg 6190 TDZE 17 Apt Elev 20
---	------------------------	---

NDB/DME RWY 23
ADAK (ADK)(PADK)

	Circling not authorized at night. Circling NA northwest of Rwy 5-23.		MALS 	MISSED APPROACH: Climb to 5000 via direct ADK NDB/DME and ADK NDB/DME 234° bearing, then climbing left turn to 9000 direct ADK NDB/DME and hold.
	AWOS-3P 134.5	ANCHORAGE CENTER 126.4 254.3	CTAF 122.9 	

[illegible]

ADAK ISLAND, ALASKA
Orig-C 14JUL22

51°53'N-176°39'W

ADAK (ADK)(PADK)
NDB/DME RWY 23

AK, 12 JUN 2025 to 07 AUG 2025

AK, 12 JUN 2025 to 07 AUG 2025