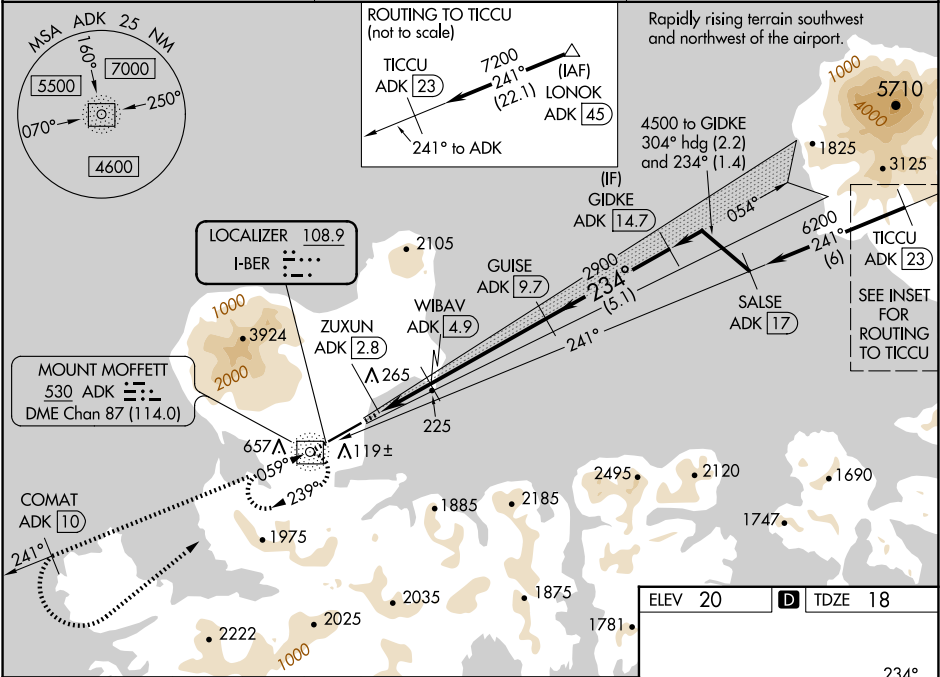





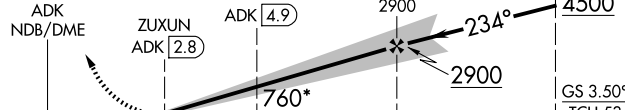

LOC I-BER	APP CRS	Rwy Idg	6190
108.9	234°	TDZE	18
		Apt Elev	20

ILS Z or LOC Z RWY 23  
ADAK (ADK) (PADK)

ADF and DME required.	MALS	MISSED APPROACH: Climb to 5400 direct ADK NDB/DME and on the 241° bearing from ADK NDB/DME to COMAT/ADK 10 DME and left turn direct ADK NDB/DME and hold. Missed approach requires minimum climb of 409 feet per NM to 2700; if unable to meet climb gradient, see ILS Y or LOC Y RWY 23.
⚠ Circling NA at night. Circling NA northwest of Rwy 5-23. Rwy 23 helicopter visibility reduction below ¾ SM NA. DME from ADK NDB. Simultaneous reception of I-BER and ADK DME required. Cat E for USAF/USN use only.	⚠	

AWOS-3P 134.5	ANCHORAGE CENTER 126.4 254.3	CTAF 122.9
------------------	---------------------------------	---------------



5400 ↑	ADK 	ADK 241°	COMAT ADK 10		ADK 			
*LOC only								
ADK NDB/DME		ZUXUN ADK 2.8	WIBAV ADK 4.9	2900 GUSE ADK 9.7	2900	4500 GIDKE ADK 14.7		
				234°	2900	4500	GS 3.50° TCH 53	
0.8		2.1 NM		4.7 NM		5.1 NM		
CATEGORY	A		B		C		D	E
S-ILS 23	309/50 291 (300-1)							
S-LOC 23	480/55 462 (500-1)			480-1 $\frac{3}{8}$ 462 (500-1 $\frac{3}{8}$ )				
 CIRCLING	720-1 700 (700-1)			1060-3 1040 (1100-3)		2400-3 2380 (2400-3)	2440-3 2420 (2500-3)	

