

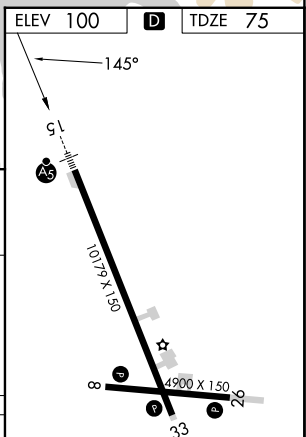
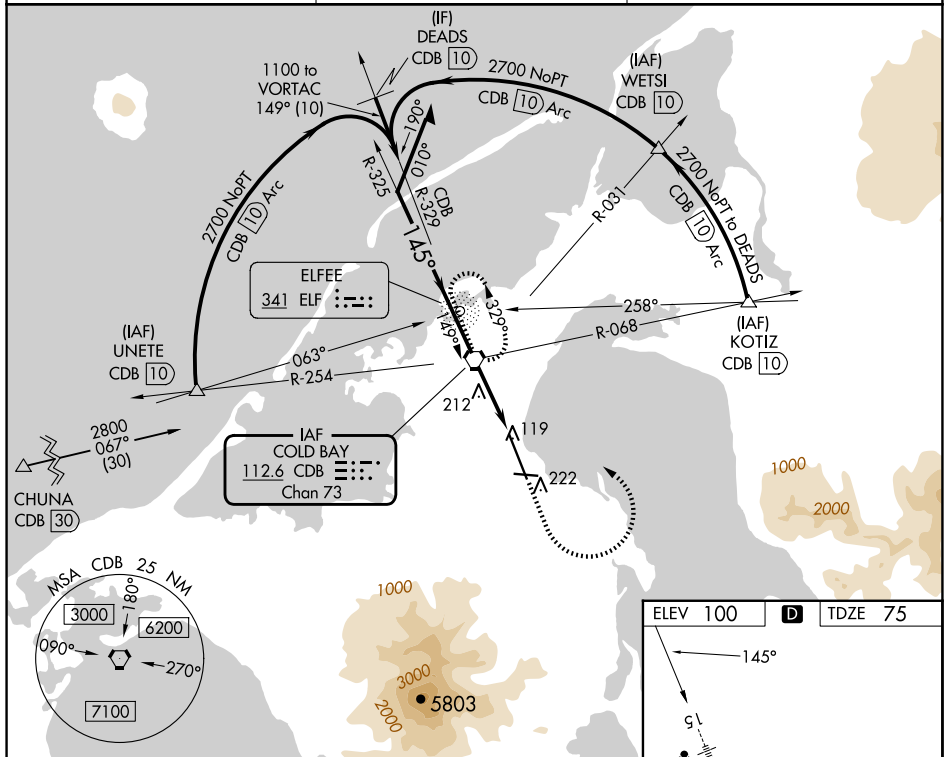
VOR RWY 15
COLD BAY (CDB) (PACD)

MALSR

- 

MISSED APPROACH: Climb to 1 200 then climbing left turn to 2700 direct CDB VORTAC and hold; continue climb-in-hold to 2700.

COLD BAY RADIO ★
123.6 (CTAF) L



The diagram illustrates a CDB VORTAC station with two flight paths. Path 1 starts at 2700 ft, turns right 325 degrees, flies 3.10 NM TCH 50, then turns left 145 degrees to a final altitude of 1100 ft. Path 2 starts at 2700 ft, turns right 325 degrees, flies 3.10 NM TCH 50, then turns left 145 degrees to a final altitude of 1100 ft. The diagram also shows a CDB VORTAC symbol and a CDB symbol.

CATEGORY	A	B	C	D
S-15	480/24	405 (400-½)	480/40	405 (400-¾)
C CIRCLING	540-1 440 (500-1)	560-1 460 (500-1)	560-1½ 460 (500-1½)	860-2½ 760 (800-2½)

HIRL all Rwys **L**