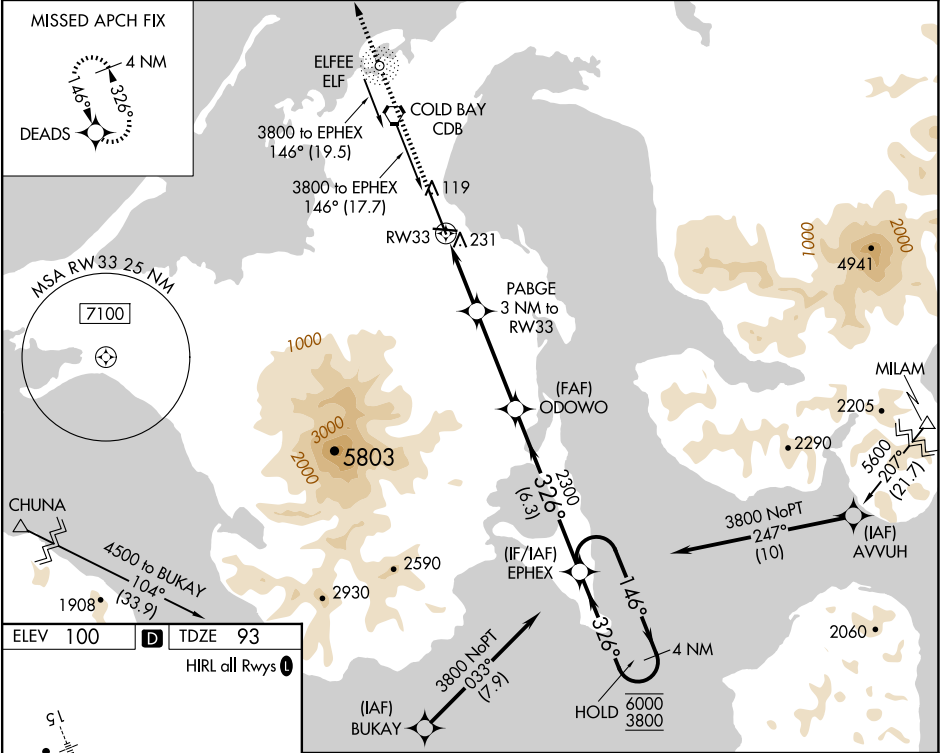


| | | |
|--|------------------------|---|
| WAAS CH 49106 W33A | APP CRS 326° | Rwy Idg 10179 TDZE 93 Apt Elev 100 |
|--|------------------------|---|

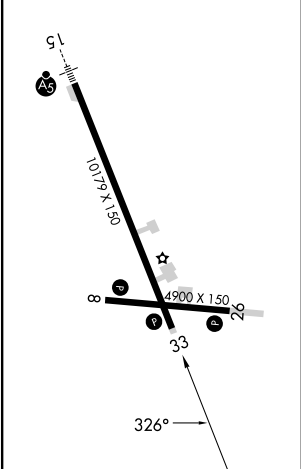
RNAV (GPS) RWY 33
COLD BAY (CDB) (PACD)

| | |
|---|---|
| RNP APCH. ▼ For uncompensated Baro-VNAV systems, LNAV/VNAV NA below -10°C or above 54°C. Circling NA for Cat A southwest of Rwy 15-33 at night. Circling NA for Cat B/C/D southwest of Rwy 15-33. ▲ | MISSED APPROACH: Climb to 3000 direct DEADS and hold. |
|---|---|

| | | |
|-----------------------|--|---|
| ASOS 135.75 | ANCHORAGE CENTER 118.5 278.3 | COLD BAY RADIO 123.6 (CTAF) 0 |
|-----------------------|--|---|



| | | |
|------------------|---|---------|
| ELEV 100 | D | TDZE 93 |
| HIRL all Rwy's 0 | | |



| | | | | | |
|-----------------|-------------------|--|---------------------------|---------------------------|----------------------|
| 3000 | DEADS | VGSi and RNAV glidepath not coincident (VGSi Angle 3.00/TCH 36). | | | |
| *LNAV only | | PABGE 3 NM to RW33 | ODOWO | EPHEX | 4 NM Holding Pattern |
| *1.2 NM to RW33 | | 1100* | 2300 | 146° | 6000 |
| 1.2 NM | | 1.8 NM | 3.8 NM | 6.3 NM | 3800 |
| CATEGORY | A | B | C | D | |
| LPV | DA | 293-3/4 200 (200-3/4) | | | |
| LNAV/VNAV | DA | 392-7/8 299 (300-7/8) | | | |
| LNAV | MDA | 500-1 407 (400-1) | | 500-1 1/8 407 (400-1 1/8) | |
| CIRCLING | 540-1 440 (500-1) | 560-1 460 (500-1) | 560-1 1/2 460 (500-1 1/2) | 860-2 1/2 760 (800-2 1/2) | |