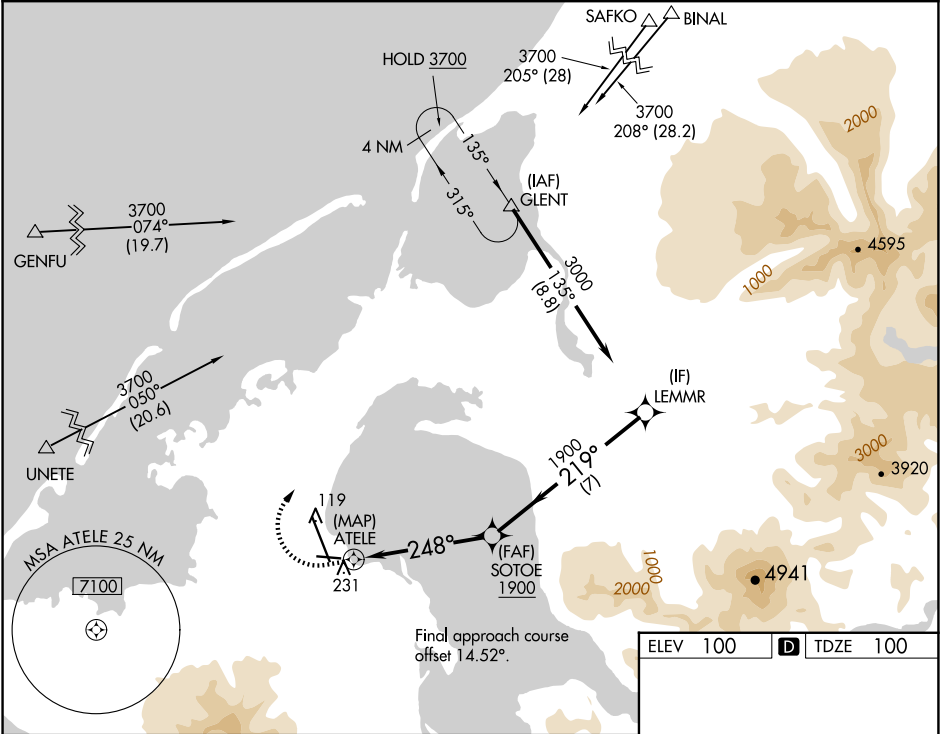


WAAS CH 42730 W26A	APP CRS 248°	Rwy Idg TDZE Apt Elev	4900 100 100
--	------------------------	-----------------------------	---

RNAV (GPS) RWY 26
COLD BAY (CDB) (PACD)

RNP APCH.	MISSED APPROACH: Climb to 800 then climbing right turn to 3700 direct GLENT and hold, continue climb-in-hold to 3700. # Missed approach requires a minimum climb of 280 feet per NM to 1180.
⚠ Circling NA for Cat B, C, and D southwest of Rwy 15-33.	

ASOS 135.75	ANCHORAGE CENTER 118.5 278.3	COLD BAY RADIO 123.6 (CTAF) 0
-----------------------	--	---



800	3700	GLENT	VGSI and descent angles not coincident (VGSI Angle 3.00/TCH 36).
↑	↘	△	
SOTOE LEMMR 3000			
0.7 NM to ATELE			
ATELE			
248° 219°			
3.00° TCH 45			
0.5 0.7 4.3 NM 7 NM			
CATEGORY	A	B	C D
LP MDA #	500-1	400 (400-1)	500-1 ½ 400 (400-1 ½)
LP MDA	660-1	560 (600-1)	660-1 ½ 560 (600-1 ½)
LNNAV MDA #	500-1	400 (400-1)	500-1 ½ 400 (400-1 ½)
LNNAV MDA	700-1	600 (600-1)	700-1 ¾ 600 (600-1 ¾)
Ⓢ CIRCLING	700-1	600 (600-1)	700-1 ¾ 860-2 ½ 600 (600-1 ¾) 760 (800-2 ½)

