

WAAS CH <b>45612</b> <b>W15A</b>	APP CRS <b>146°</b>	Rwy Idg TDZE <b>75</b> Apt Elev <b>100</b>	<b>10179</b>
--	------------------------	--	--------------

RNAV (GPS) RWY 15

COLD BAY (CDB) (PACD)

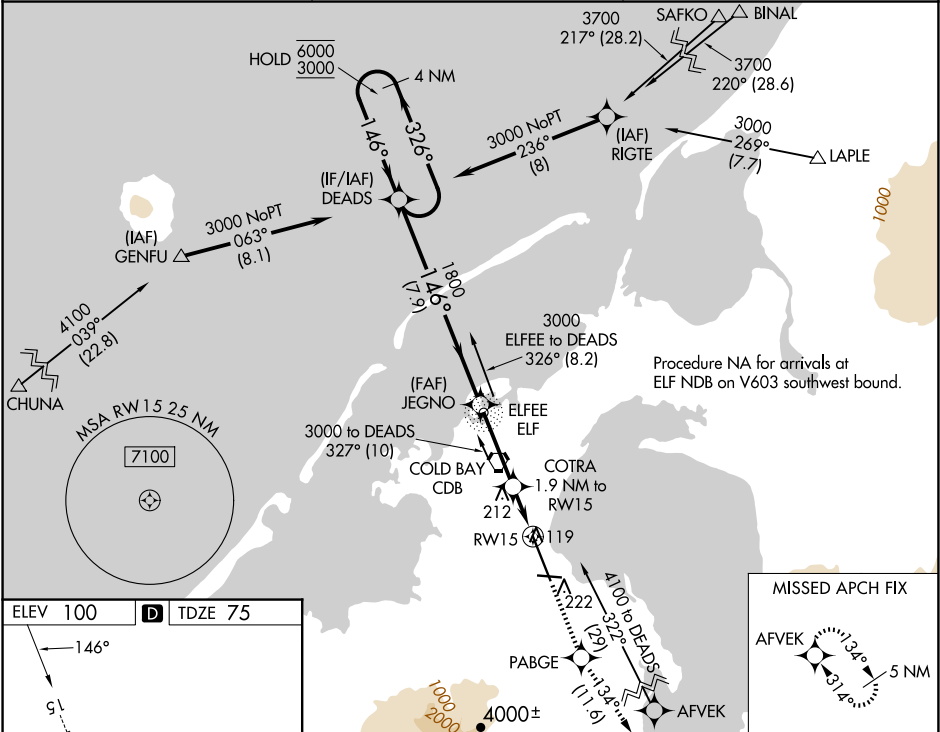
RNP APCH.

For uncompensated Baro-VNAV systems, LNAV/VNAV NA below -10°C or above 54°C. Circling NA for Cat A southwest of Rwy 15-33 at night. Circling NA for Cats B/C/D southwest of Rwy 15-33. For inop ALS, increase LNAV/VNAV all Cats visibility to RVR 4000 and LNAV Cat C/D visibility to RVR 6000.  
#RVR 1800 authorized with use of FD or AP or HUD to DA.

MALSR

MISSED APPROACH: Climb to 4100 direct PABGE and on track 134° to AFVEK and hold, continue climb-in-hold to 4100.

ASOS <b>135.75</b>	ANCHORAGE CENTER <b>118.5 278.3</b>	COLD BAY RADIO <b>123.6 (CTAF) 0</b>
-----------------------	--	---



ELEV 100 D TDZE 75

HIRL all Rwys 0

4 NM Holding Pattern		DEADS	JEGNO	4100 ↑	PABGE ✦	tr 134° ✦	AFVEK ✦
6000 ← 326° 3000 → 146°		1800		COTRA 1.9 NM to *1.1 NM RW15 to RW15		*LNAV only	
GP 3.10° TCH 55		1800		*760		RW15	
		7.9 NM		3.2 NM		0.8 NM	
						1.1 NM	
CATEGORY	A	B	C	D			
LPV DA#	275/24		200 (200-½)				
LNAV/VNAV DA	325/24		250 (300-½)				
LNAV MDA	480/24		405 (400-½)		480/40		405 (400-¾)
CIRCLING	540-1		560-1		560-1½		860-2½
	440 (500-1)		460 (500-1)		460 (500-½)		760 (800-2½)