

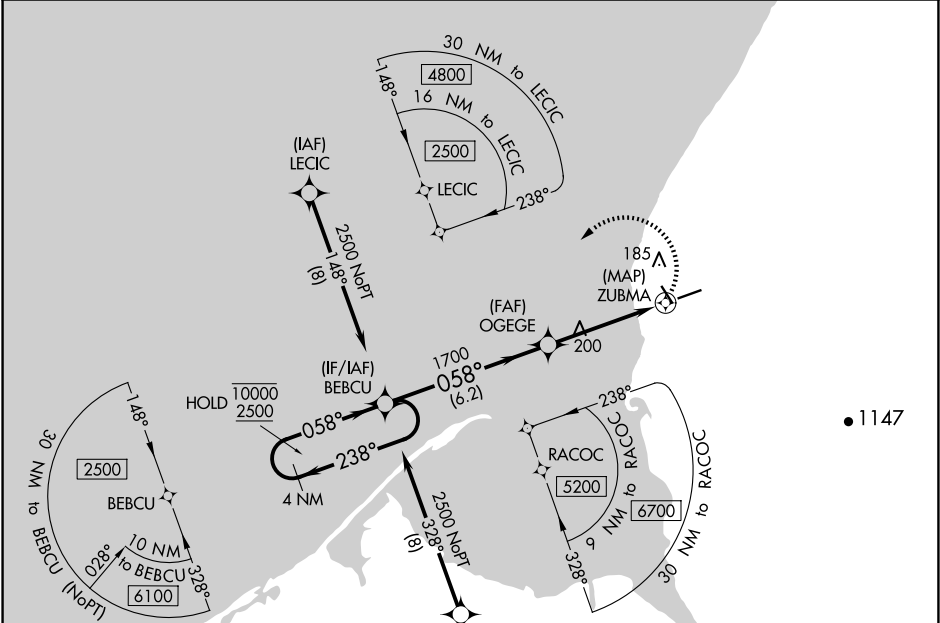
APP CRS	Rwy Idg	5000
058°	TDZE	93
	Apt Elev	95

RNAV (GPS) RWY 6

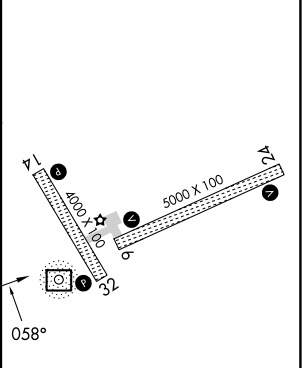
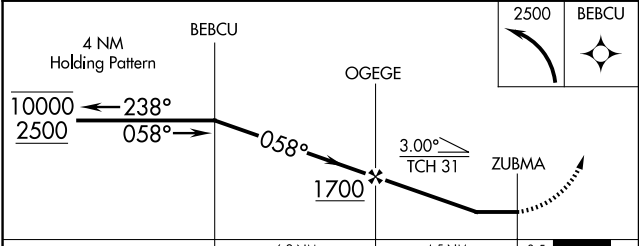
PORT HEIDEN (PTH)(PAPH)

RNP APCH.	MISSED APPROACH: Climbing left turn to 2500 direct BEBCU and hold.
<div><div></div><div></div></div> Rwy 6 helicopter visibility reduction below 1 SM NA.	

AWOS-3P 135.4	ANCHORAGE CENTER 132.9 288.3	CTAF 122.8
------------------	---------------------------------	---------------



ELEV 95	TDZE 93
---------	---------



CATEGORY	A	B	C	D
LNAV MDA	500-1	407 (500-1)	500-1½	407 (500-1½)
CIRCLING	500-1 405 (500-1)	560-1 465 (500-1)	560-1½ 465 (500-1½)	700-2 605 (700-2)

REIL Rwy 6
REIL Rwy 14
MRL Rwy 6-24 and 14-32

AK, 12 JUN 2025 to 07 AUG 2025

AK, 12 JUN 2025 to 07 AUG 2025