

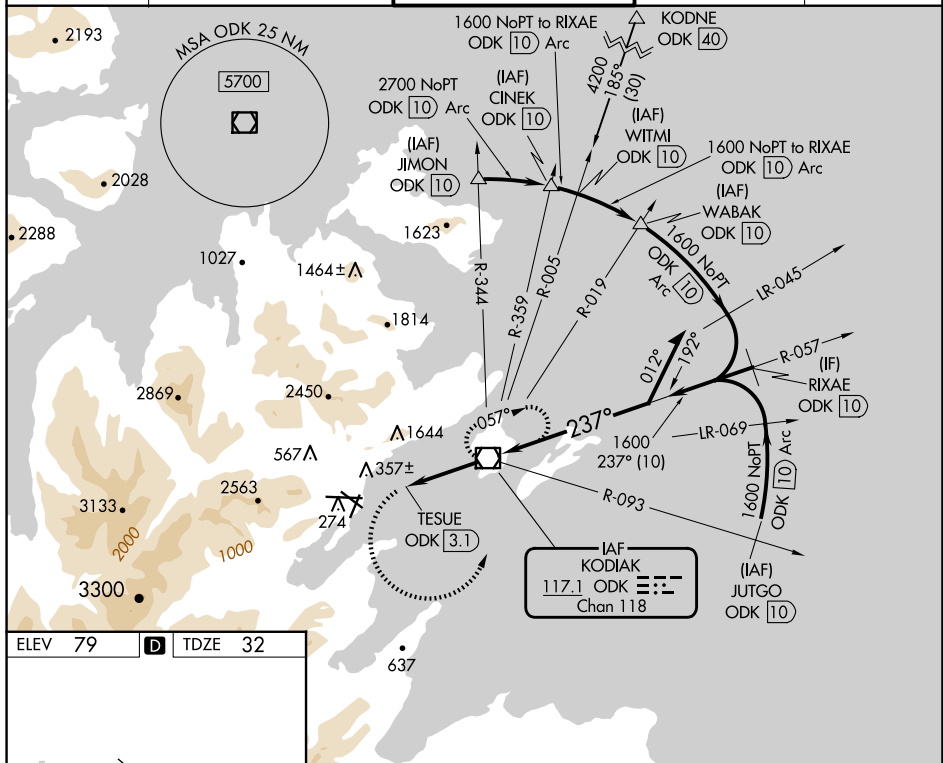
VOR/DME ODK <u>117.1</u> Chan 118	APP CRS 237°	Rwy Idg 7534 TDZE 32 Apt Elev 79
--	------------------------	---

VOR RWY 26
KODIAK (ADQ)(PADQ)

T Circling NA north of Rwy 8-26 and west of Rwy 1-19.
A Circling Rwy 1 NA at night. Circling NA to Rwy 8, 11 and 19.
 Rapidly rising terrain north, west, and south of airport.

MISSED APPROACH: Climbing left turn to 3700 on heading 079° then left turn direct ODK VOR/DME and hold.

ATIS 134.45	ANCHORAGE CENTER 125.1 281.4	KODIAK TOWER * 119.8 (CTAF) 0 239.0	GND CON 121.9	UNICOM 122.8
-----------------------	--	---	-------------------------	------------------------



REIL Rwy's 1 and 26
HIRL Rwy's 1-19, 8-26, and 11-29

FAF to MAP 3.1 NM

Knots	60	90	120	150	180
Min:Sec	3:06	2:04	1:33	1:14	1:02

CIRCLING

CATEGORY	A	B	C	D
S-26	660-2	628 (600-2)		
	660-2 581 (600-2)	720-2 641 (700-2)	1140-3 1061 (1100-3)	NA

KODIAK, ALASKA
Amdt 3A 20JUN19

KODIAK (ADQ)(PADQ)
VOR RWY 26

57°45'N-152°30'W

AK, 12 JUN 2025 to 07 AUG 2025

AK, 12 JUN 2025 to 07 AUG 2025