

WAAS CH 72608 W12A	APP CRS 121°	Rwy Idg TDZE 62 Apt Elev 73
--	------------------------	---

RNAV (GPS) RWY 12

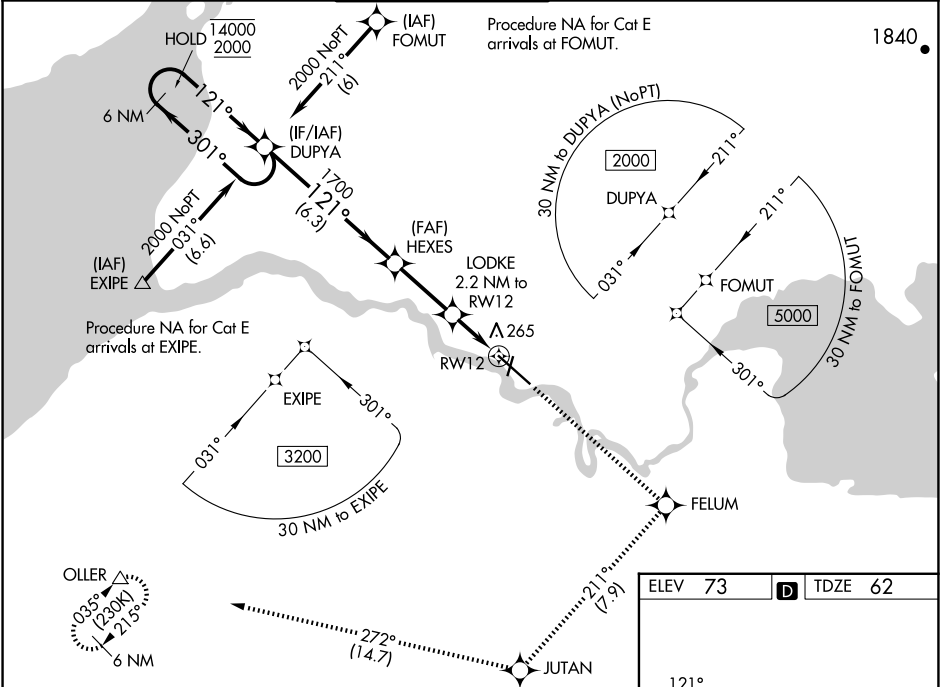
KING SALMON (AKN)(PAKN)

For uncompensated Baro-VNAV systems, procedure NA below -18°C or above 54°C.
For inop ALS, increase LPV Cat E visibility to RVR 4000, increase LNAV/VNAV all Cats visibility to RVR 5000 and increase LNAV Cat E visibility to 1½ SM. When control tower closed, LPV, LNAV/VNAV and LNAV visibility RVR 5000. When control tower closed, inop table does not apply to LPV, LNAV/VNAV and LNAV Cats A/B.
RVR 1800 authorized with use of FD or AP or HUD to DA (NA when control tower closed).

MALSR

MISSED APPROACH:
Climb to 3000 direct FELUM and on track 211° to JUTAN and on track 272° to OLLER and hold.

ATIS 128.8	ANCHORAGE CENTER 124.8 354.0	KING SALMON TOWER* 118.3 279.5	GND CON 121.9	UNICOM 122.95	CTAF 121.9 352.05
----------------------	--	--	-------------------------	-------------------------	-----------------------------



VGSI and RNAV glidepath not coincident (VGSI Angle 3.00/TCH 66).					
Holding Pattern					
GP 3.00° TCH 55					
6.3 NM 2.8 NM 1 NM 1.2 NM					
CATEGORY	A	B	C	D	E
LPV DA#	262/24 200 (200-½)				
LNAV/VNAV DA	426/35 364 (400-¾)				
LNAV MDA	520/24 458 (500-½) 520/45 458 (500-¾)				
CIRCLING	580-1 507 (600-1) 580-1½ 900-2¾ 960-3 507 (600-1½) 827 (900-2¾) 887 (900-3)				

ELEV 73

TDZE 62

121°

AS

4017

8001 X 150

4000 X 300

TWR 125

NW 36

30