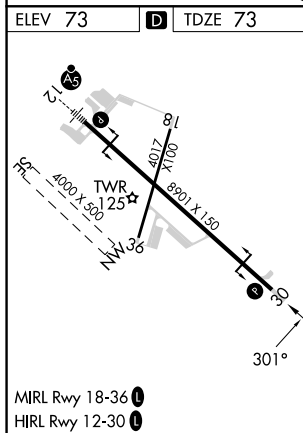
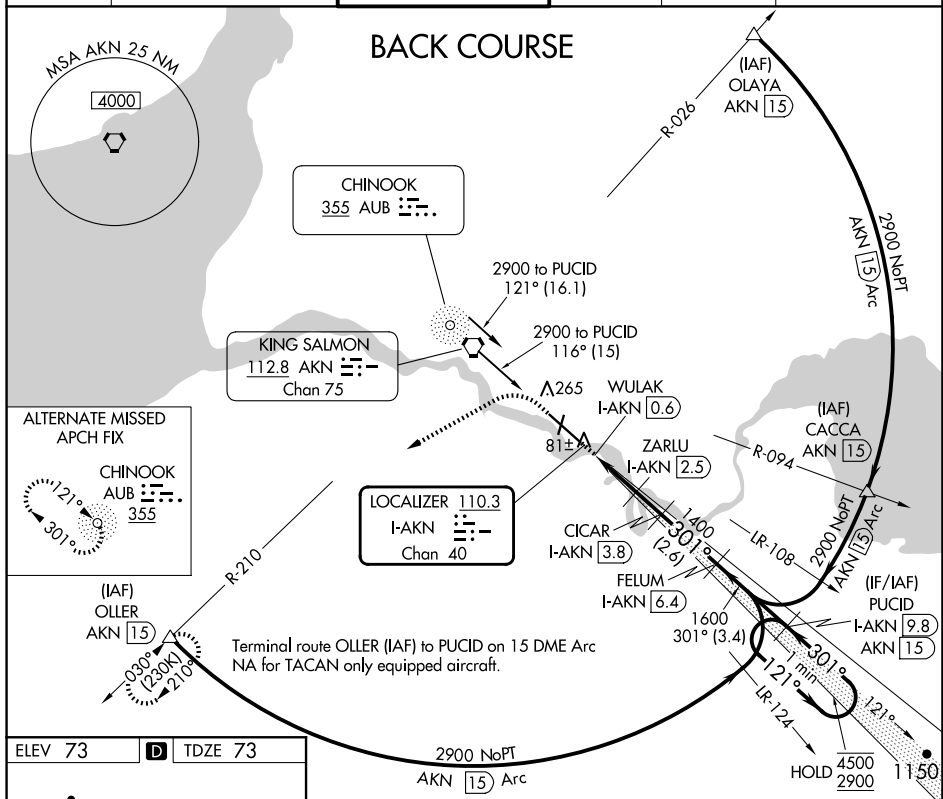


24305

LOC BC RWY 30
KING SALMON (AKN)(PAKN)

MISSED APPROACH: Climb to 600 then climbing left turn to 3000 on heading 240° and AKN VORTAC R-210 to OLLER/15 DME and hold.

ATIS 128.8	ANCHORAGE CENTER 124.8 354.0	KING SALMON TOWER* 118.3 279.5	GND CON 121.9	UNICOM 122.95	CTAF 121.9 352.05
---------------	---------------------------------	-----------------------------------	------------------	------------------	----------------------



600 ↑	3000 hdg 240°	AKN R-210	OLLER △	Disregard GS indications.		PUCID I-AKN [9.8]	One Minute Holding Pattern
		ZARLU I-AKN [2.5]	CICAR I-AKN [3.8]	FELUM I-AKN [6.4]			
WULAK I-AKN [0.6]		3.10° TCH 45		301°	121° → 4500 ← 301° 2900	Use I-AKN DME when on the localizer course.	
0.7		1.9 NM	1.3 NM	2.6 NM	3.4 NM		
CATEGORY	A	B	C	D	E		
S-30	340-1 267 (300-1)						
C CIRCLING	580-1	507 (600-1)	580-1½ 507 (600-1½)	900-2¾ 827 (900-2¾)	960-3 887 (900-3)		

KING SALMON (AKN)(PAKN)
LOC BC RWY 30

58°41'N-156°39'W

AK, 12 JUN 2025 to 07 AUG 2025