

HI-VOR Z or TACAN Z RWY 30

VORTAC AKN <b>112.8</b> Chan <b>75</b>	APCH CRS <b>296°</b>	Rwy Idg TDZE Arpt Elev <b>8501</b> <b>73</b> <b>73</b>
--	-------------------------	---

[USAF]

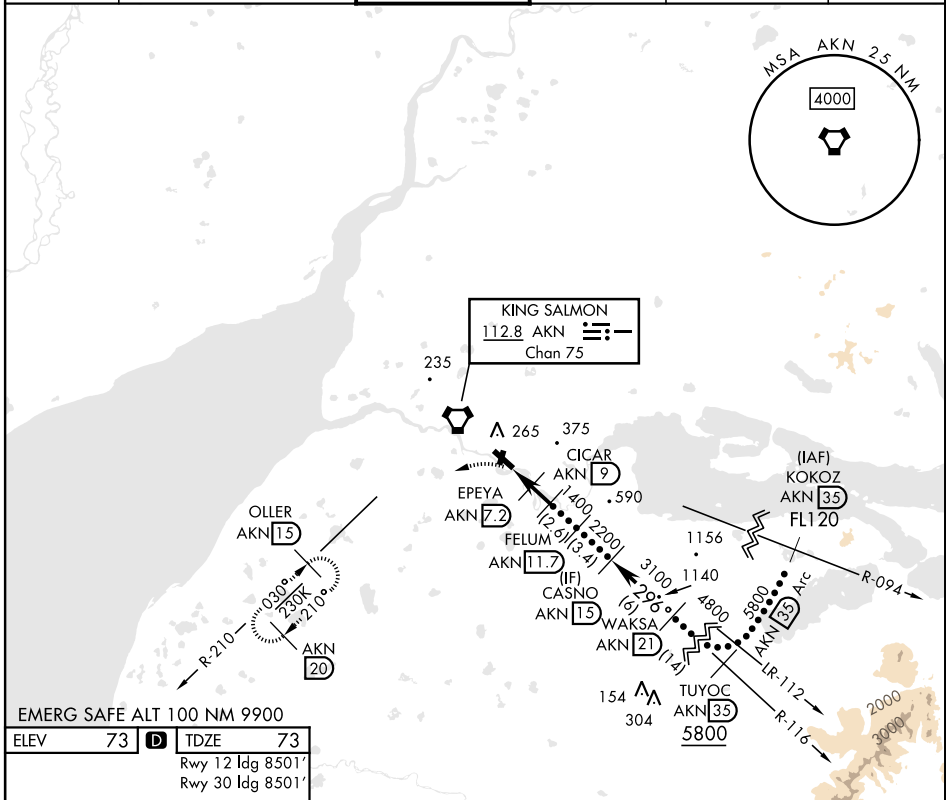
KING SALMON (AKN) (PAKN)

DME required.

MISSED APPROACH: Climbing left turn to 3000 on heading 240° and on AKN VORTAC R-210 to OLLER/ 15 DME and hold.

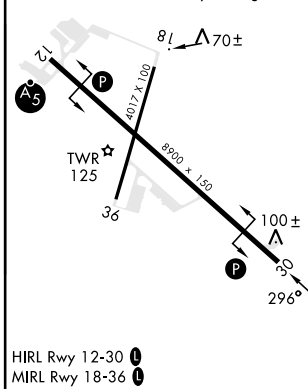
**33**-31° C

ATIS <b>128.8</b>	ANCHORAGE CENTER <b>124.8 354.0</b>	TOWER ★ <b>118.3 279.5</b>	GND CON <b>121.9</b>	CTAF <b>121.90 352.05</b>	UNICOM <b>122.95</b>
----------------------	--	-------------------------------	-------------------------	------------------------------	-------------------------



EMERG SAFE ALT 100 NM 9900

ELEV <b>73</b>	<b>D</b>	TDZE <b>73</b>
Rwy 12 Idg 8501'		
Rwy 30 Idg 8501'		



KING SALMON, ALASKA

58°41'N-156°39'W

KING SALMON (AKN) (PAKN)

Amdt 6 03NOV22

HI-VOR Z or TACAN Z RWY 30

AK, 12 JUN 2025 to 07 AUG 2025