

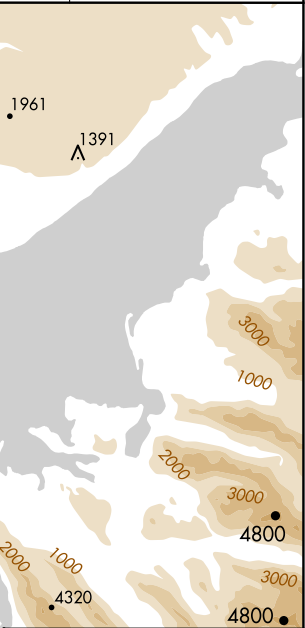
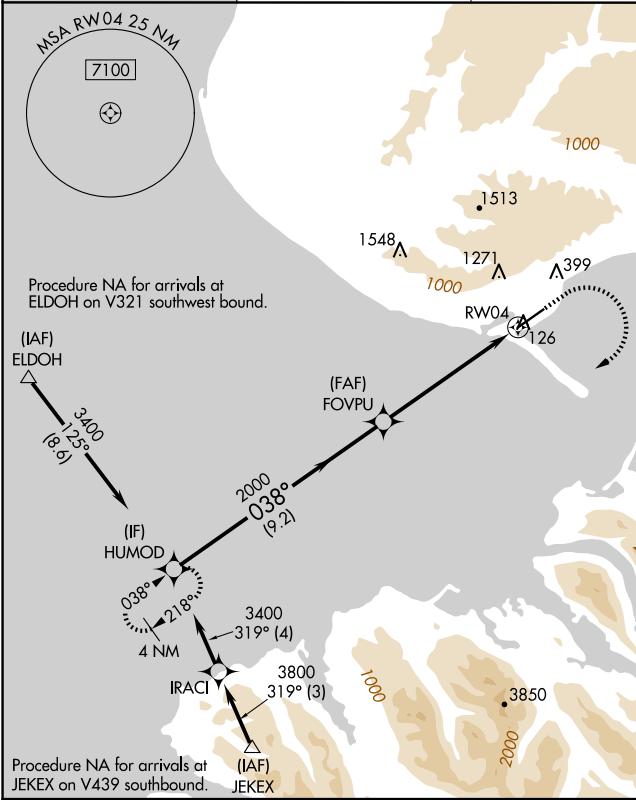
WAAS CH <b>86302</b> <b>W04A</b>	APP CRS <b>038°</b>	Rwy Ldg TDZE <b>78</b> Apt Elev <b>84</b>
--	------------------------	---

RNAV (GPS) Z RWY 4

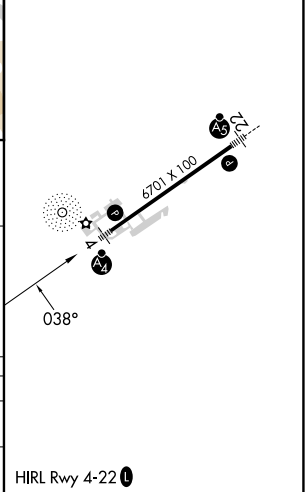
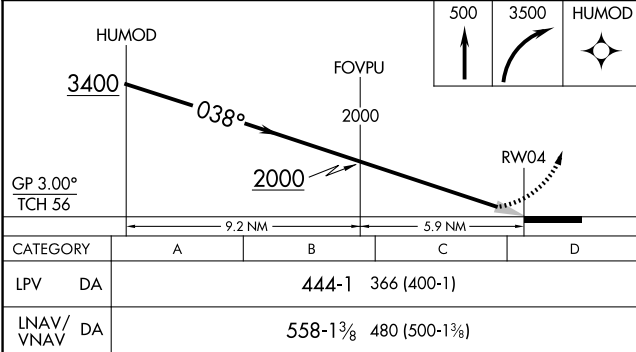
HOMER (HOM) (PAHO)

RNP APCH - GPS.	MALSF	MISSED APPROACH: Climb to 500 then climbing right turn to 3500 direct HUMOD and hold.
▼ For uncompensated Baro-VNAV systems, LNAV/VNAV NA below -21°C or above 54°C. Inop table does not apply to LPV all Cats.		

AFIS <b>135.65</b>	ANCHORAGE CENTER <b>125.9 270.3</b>	HOMER RADIO <b>123.6 (CTAF) 1</b>	UNICOM <b>122.7 123.0 123.05</b>
-----------------------	--	--------------------------------------	-------------------------------------



ELEV <b>84</b>	TDZE <b>78</b>
----------------	----------------



AK, 12 JUN 2025 to 07 AUG 2025

AK, 12 JUN 2025 to 07 AUG 2025