



WAAS CH 86933 W04B	APP CRS 038°	Rwy Ldg 6701 TDZE 78 Apt Elev 84
--	------------------------	---

RNAV (GPS) Y RWY 4
HOMER (HOM) (PAHO)

RNP APCH.			MISSED APPROACH: Climb to 500 then climbing right turn to 3500 direct HUMOD and hold.
 Circling NA northwest of Rwy 4-22. Inop table does not apply to LP and UNAV Cats A/B. Circling NA to waterways 6W and 24W. For inop ALS, increase LP Cat/D visibility to 1½ SM.			
AFIS 135.65	ANCHORAGE CENTER 125.9 270.3	HOMER RADIO 123.6 (CTAF) 0	UNICOM 122.7 123.0 123.05

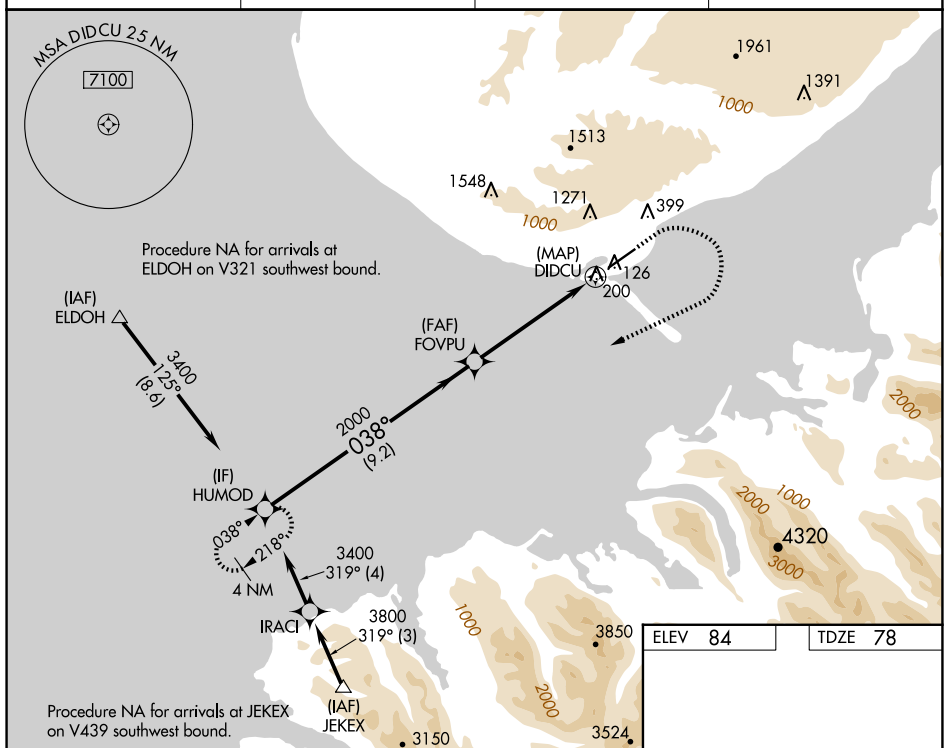


Diagram illustrating a Visual Segment - Obstacles. The segment starts at HUMOD (3400) and ends at DIDCU. The path is divided into three segments: A (9.2 NM), B (5.3 NM), and C (0.6 NM). The path is labeled with a heading of 038° and a distance of 2000. A vertical line marks the FOVPU. A legend indicates that the path is a straight line (up arrow) and a curve (curved arrow).

