

HOMER, ALASKA

AL-1236 (FAA)

25163

| | | |
|--|------------------------|---|
| WAAS CH 72633 W22B | APP CRS 228° | Rwy Ldg 6701 TDZE 84 Apt Elev 84 |
|--|------------------------|---|

RNAV (GPS) Y RWY 22
HOMER (HOM) (PAHO)

RNP APCH.

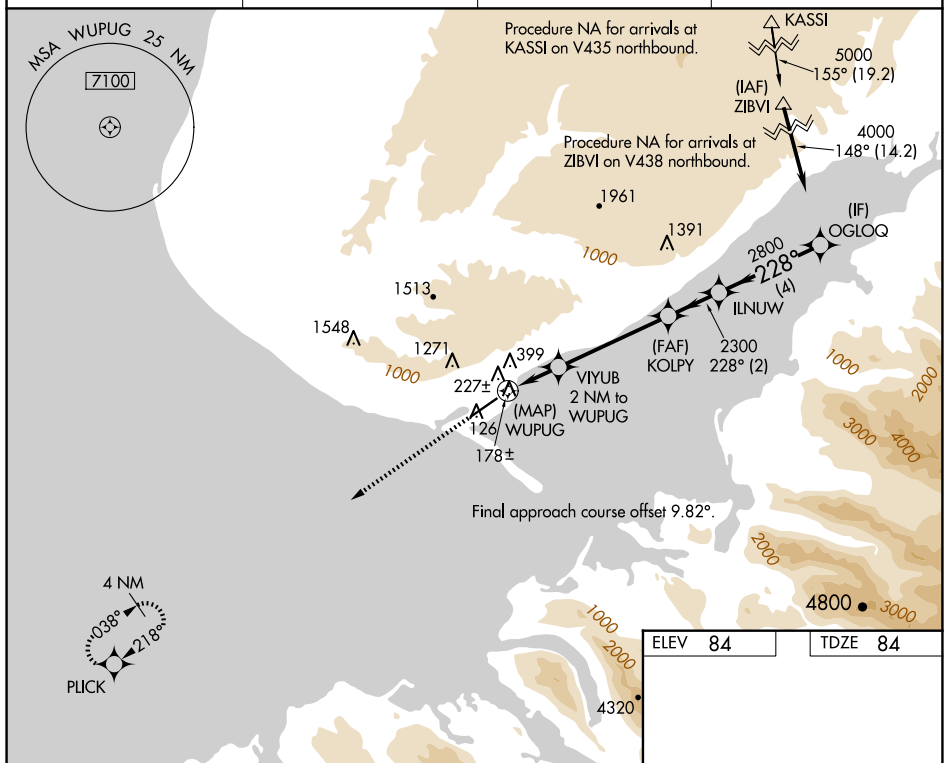
T Inop table does not apply to LP and LNAV Cat A/B. Circling NA northwest of
A Rwy 4-22. Circling NA to waterways 6W and 24W. For inop ALS, increase
LP Cat C/D visibility to 1½ SM and LNAV Cat C/D to 1¾ SM.

MALSR



MISSED APPROACH: Climb to 2600 direct PLICK and hold.

| | | | |
|-----------------------|--|---|-------------------------------------|
| AFIS 135.65 | ANCHORAGE CENTER 125.9 270.3 | HOMER RADIO 123.6 (CTAF) 0 | UNICOM 122.7 123.0 123.05 |
|-----------------------|--|---|-------------------------------------|



HOMER, ALASKA
Amdt 1C 20JUN19

59°39'N-151°29'W

HOMER (HOM) (PAHO)

RNAV (GPS) Y RWY 22

AK, 12 JUN 2025 to 07 AUG 2025