

LOC/DME I-HOM
109.3
Chan **30**

APP CRS
038°

Rwy Ldg
TDZE **78**
Apt Elev **84**

LOC RWY 4

HOMER (HOM)(PAHO)

ADF or DME required for procedure entry. DME required.

▼

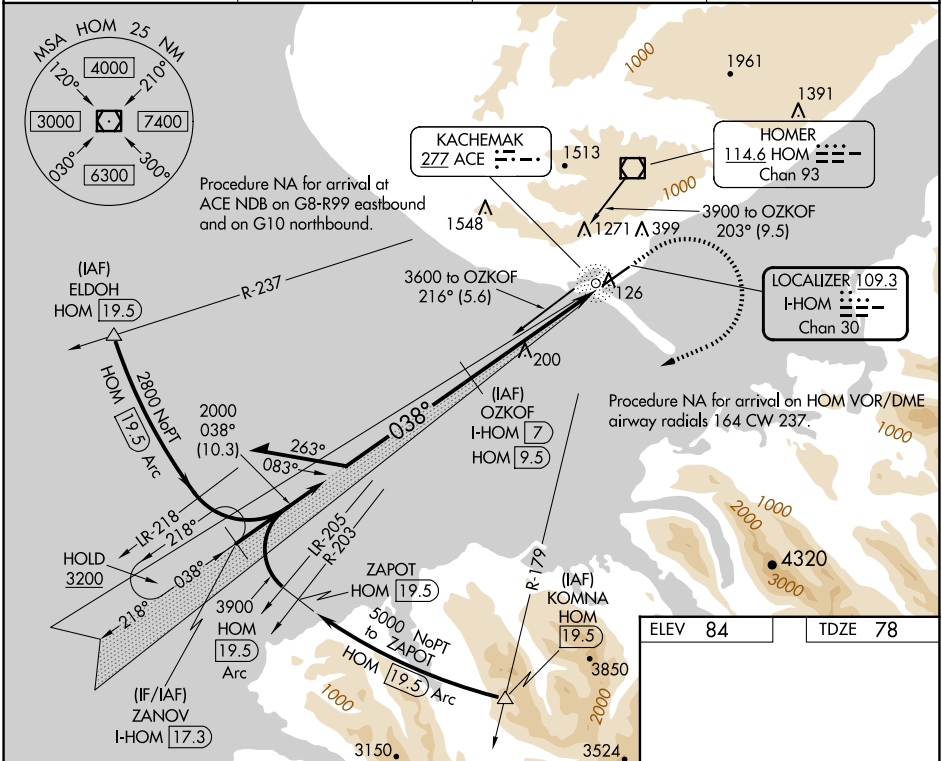
▲

Circling NA northwest of Rwy 4-22. Inop table does not apply to Cats A and B. For inop ALS increase Cat C/D visibility to 1½ SM. Circling NA to waterways 6W and 24W.

MALSF

MISSED APPROACH: Climb to 500 then climbing right turn to 3200 on heading 230° and on ACE NDB bearing 217° to ZANOV/I-HOM 17.3 DME and hold.

AFIS 135.65	ANCHORAGE CENTER 125.9 270.3	HOMER RADIO 123.6 (CTAF) 0	UNICOM 122.7 123.0 123.05
-----------------------	----------------------------------------	--------------------------------------	-------------------------------------



Remain within 10 NM

3000

218°

038°

2000

Use I-HOM DME when on the localizer course.

4.7 NM

1.1

OZKOF I-HOM 7

500

3200

ACE

ZANOV I-HOM 17.3

Visual Segment - Obstacles.

I-HOM 2.3

I-HOM 1.2

hdg 230°

217°

CATEGORY	A	B	C	D
S-LOC 4	460-1 382 (400-1)			
CIRCLING	500-1 416 (500-1)	540-1 456 (500-1)	540-1½ 456 (500-1½)	760-2¼ 676 (700-2¼)

HIRL Rwy 4-22 0

ELEV 84

TDZE 78