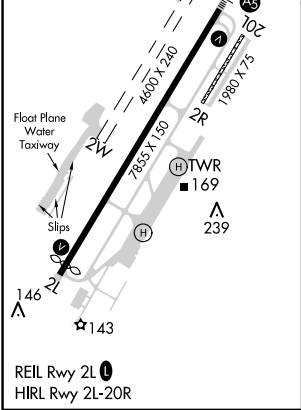
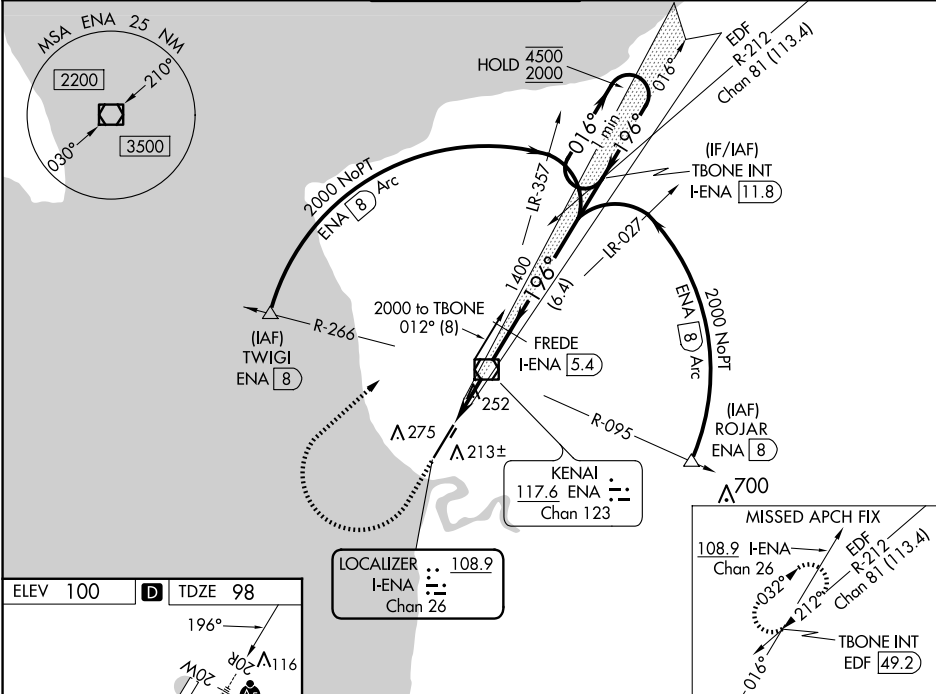


LOC/DME I-ENA <b>108.9</b> Chan <b>26</b>	APP CRS <b>196°</b>	Rwy ldg <b>7575</b> TDZE <b>98</b> Apt Elev <b>100</b>
---	------------------------	--

ILS Y or LOC Y RWY 20R  
KENAI MUNI (ENA) (PAEN)

TACAN required.	MALSR	MISSED APPROACH: Climb to 1800 then climbing right turn to 4000 on heading 046° and on EDF TACAN R-212 to TBONE INT/EDF 49.2 DME and hold. † Missed approach requires minimum climb of 800 feet per NM to 4000; if unable to meet climb gradient, see ILS Z or LOC Z RWY 20R.
⚠ Circling NA to Rwy 2W and 20W. Circling Rwy 2R, 20L NA at night. For inop ALS, increase S-ILS 20R Cat E visibility to RVR 4000. For inop ALS, increase S-LOC 20R Cat E visibility to 1¼ SM. # RVR 1800 authorized with use of FD or AP or HUD to DA.		

ATIS <b>133.35</b>	ANCHORAGE CENTER <b>125.7 379.1</b>	KENAI TOWER★ <b>121.3 (CTAF) 0 239.3</b>	GND CON <b>118.75</b>	KENAI RADIO <b>122.65</b>
-----------------------	--	---	--------------------------	------------------------------



ELEV 100	D	TDZE 98
1800	4000	EDF R-212
196°	hdg 046°	TBONE INT
*LOC only	I-ENA 1.4	FREDE I-ENA 5.4
	*I-ENA 2.6	1400
		196°
		016°
		4500
		2000
		GS 3.00°
		TCH 51
CATEGORY	A	B
S-ILS 20R#†	298/24	200 (200-½)
S-LOC 20R†	520/24	422 (500-½)
	560-1	580-1
CIRCLING	460 (500-1)	480 (500-1)
	580-1½	680-2
	480 (500-1½)	580 (600-2)
	760-2¼	660 (700-2¼)