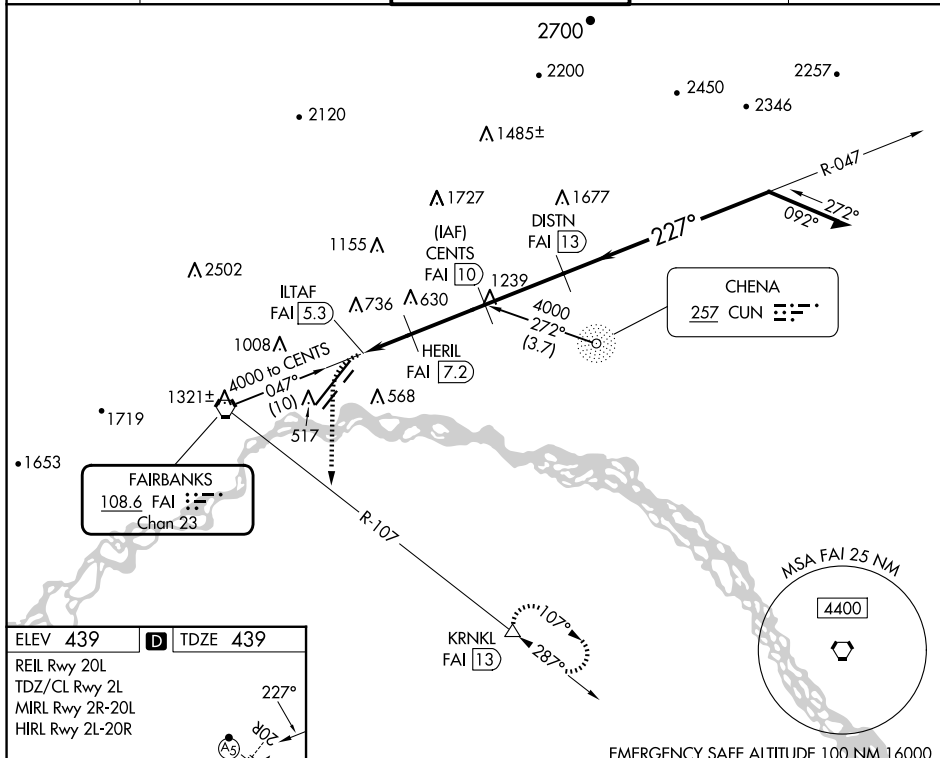


TACAN RWY 20R
FAIRBANKS INTL (FAI) (PAFA)

MALSR

MISSED APPROACH: Climbing left turn to 4000 on heading 160° and FAI VORTAC R-107 to KRNL/FAI 13 DME and hold, continue climb-in-hold to 4000.

ATIS 124.4	FAIRBANKS APP CON 125.35 363.2	FAIRBANKS TOWER 118.3 257.8	GND CON 121.9	CLNC DEL 127.6
----------------------	--	---------------------------------------	-------------------------	--------------------------



ELEV 439TDZE 439

REIL Rwy 20L
TDZ/CL Rwy 2L
MIRL Rwy 2R-20L
HIRL Rwy 2L-20R

The diagram illustrates the layout of Runway 20L/20R. The runway is oriented at 227 degrees. The centerline is marked with a dashed line and the number 1800. The runway width is marked with the number 150. The runway is flanked by lights: REIL (Runway End Identifier Lights) for Rwy 20L, TDZ/CL (Touchdown Zone/Centerline) for Rwy 2L, MIRL (Medium Intensity Runway Lights) for Rwy 2R-20L, and HIRL (High Intensity Runway Lights) for Rwy 2L-20R. The diagram also shows the location of the Tower (TWR 540) and the FAF (Final Approach Fix) at 4.7 NM from the runway. The diagram includes various navigation aids and lights: REIL (Runway End Identifier Lights) for Rwy 20L, TDZ/CL (Touchdown Zone/Centerline) for Rwy 2L, MIRL (Medium Intensity Runway Lights) for Rwy 2R-20L, and HIRL (High Intensity Runway Lights) for Rwy 2L-20R.

FAF to Runway 4.7 NM					
Knots	60	90	120	150	180
Min:Sec	4:42	3:08	2:21	1:53	1:34