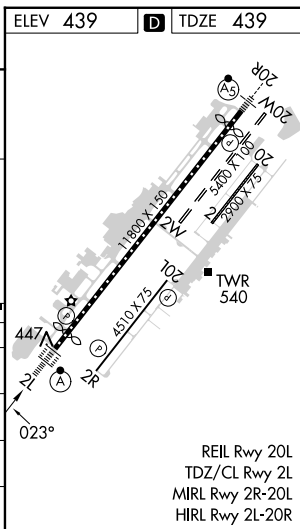
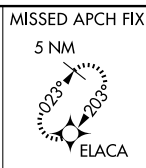


RNAV (GPS) Y RWY 2L
FAIRBANKS INTL (FAI) (PAFA)

ALSF-2

—

MISSED APPROACH: Climb to 4900 direct ELACA and hold, continue climb-in hold to 4900.

CLNC DEL
127.6

FAIRBANKS INTL (FAI) (PAFA)
RNAV (GPS) Y RWY 2L

AK, 12 JUN 2025 to 07 AUG 2025