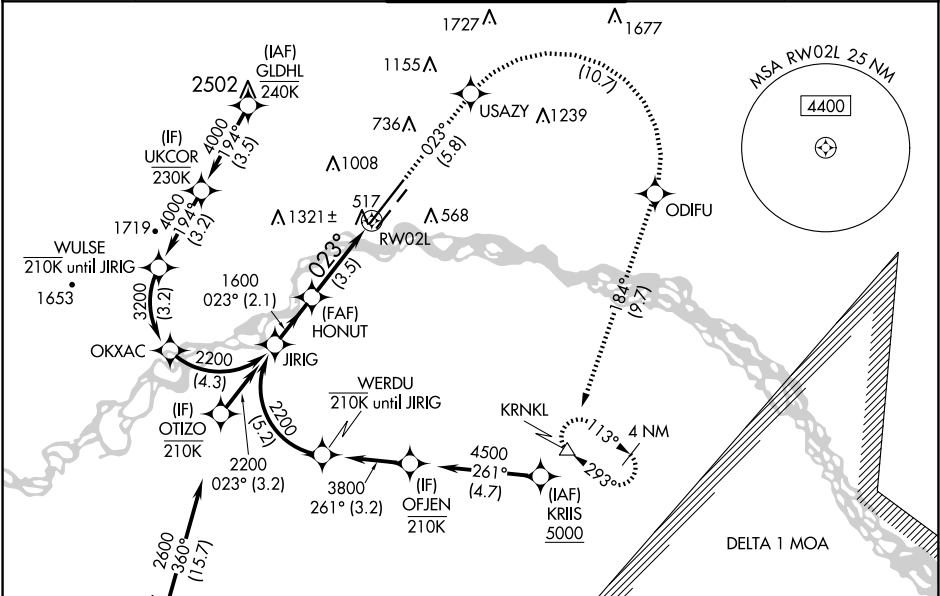


APP CRS	Rwy Idg	11050
023°	TDZE	439
	Apt Elev	439

RNAV (RNP) Z RWY 2L  
FAIRBANKS INTL (FAI) (PAFA)

RNP AR APCH - GPS.	ALSF-2	MISSED APPROACH: Climb to 5000 on track 023° USAZY then right turn to ODIFU and track 184° to KRNL and hold.
For uncompensated Baro-VNAV systems, procedure NA below -19°C or above 54°C. For inop ALS, increase RNP 0.10* all Cats visibility to RVR 5500, and increase RNP 0.10 all Cats visibility to RVR 5500, and increase RNP 0.30 all Cats visibility to RVR 6000.		*Missed approach requires minimum climb of 222 feet per NM to 2420.

ATIS	FAIRBANKS APP CON	FAIRBANKS TOWER	GND CON	CLNC DEL
124.4	125.35 363.2	118.3 257.8	121.9	127.6



See planview for multiple IF locations.	5000	USAZY	ODIFU	KRNL
JIRIG	HONUT	tr 023°	tr 184°	△
VGSI and RNAV glidepath not coincident (VGSI Angle 3.00/TCH 73).				
GP 3.00°	2.1 NM	3.5 NM	RW02L	
TCH 56				
CATEGORY	A	B	C	D
RNP 0.10 DA*	755/24 316 (400-½)			
RNP 0.10 DA	805/35 366 (400-⅔)			
RNP 0.30 DA	855/40 416 (500-¾)			
AUTHORIZATION REQUIRED				

