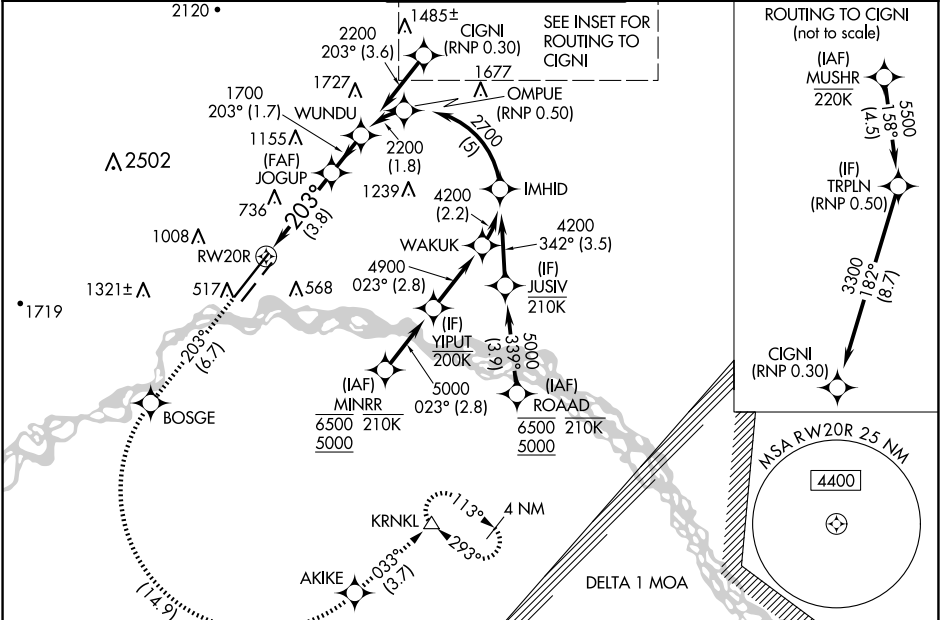






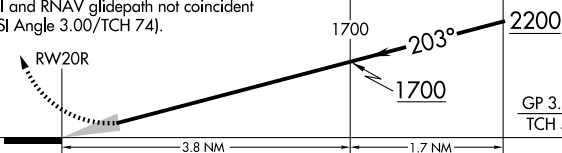
APP CRS	Rwy ldg	11050
203°	TDZE	439
	Apt Elev	439

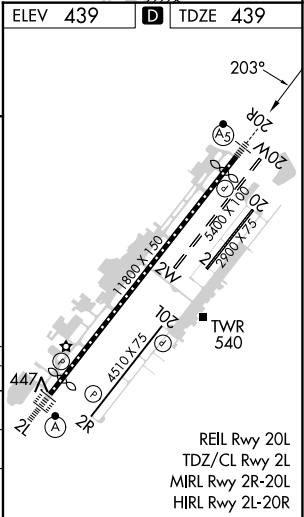
RNAV (RNP) Z RWY 20R
FAIRBANKS INTL (FAI) (PAFA)

RNP AR APCH - GPS.	MALSR	MISSED APPROACH: Climb to 4000 on track 203° to BOSGE then left turn to AKIKE then on track 033° to KRNLK and hold.
▼ -29°C		
For uncompensated Baro-VNAV systems, procedure NA below -18°C or above 54°C. For inop ALS, increase RNP 0.30 all Cats visibility to 1 1/2 SM.		

ATIS	FAIRBANKS APP CON	FAIRBANKS TOWER	GND CON	CLNC DEL
124.4	125.35 363.2	118.3 257.8	121.9	127.6



4000 ↑ tr 203°	BOSGE 	AKIKE 	tr 033° 	KRNLK 	See planview for multiple IF locations.
VGSI and RNAV glidepath not coincident (VGSI Angle 3.00/TCH 74).					WUNDU
					
CATEGORY	A	B	C	D	
RNP 0.10 DA	763/26 324 (400-1/2)				
RNP 0.30 DA	923/50 484 (500-1)				
AUTHORIZATION REQUIRED					



AK, 12 JUN 2025 to 07 AUG 2025

AK, 12 JUN 2025 to 07 AUG 2025