

WAAS CH 93812 W20A	APP CRS 203°	Rwy Idg 4510 TDZE 434 Apt Elev 439
--	------------------------	---

RNAV (GPS) RWY 20L
FAIRBANKS INTL (FAI) (PAFA)

RNP APCH-GPS.

T Circling NA west of Rwy 2L-20R. For uncompensated Baro-VNAV systems, LNAV/VNAV NA below -20°C or above 54°C. Circling NA to Rwy 2W/20W and 2/20.

MISSED APPROACH: Climb to 3700 direct DOUGE and hold, continue climb-in-hold to 3700.

ATIS 124.4	FAIRBANKS APP CON 125.35 363.2	FAIRBANKS TOWER 118.3 257.8	GND CON 121.9	CLNC DEL 127.6
---------------	-----------------------------------	--------------------------------	------------------	-------------------

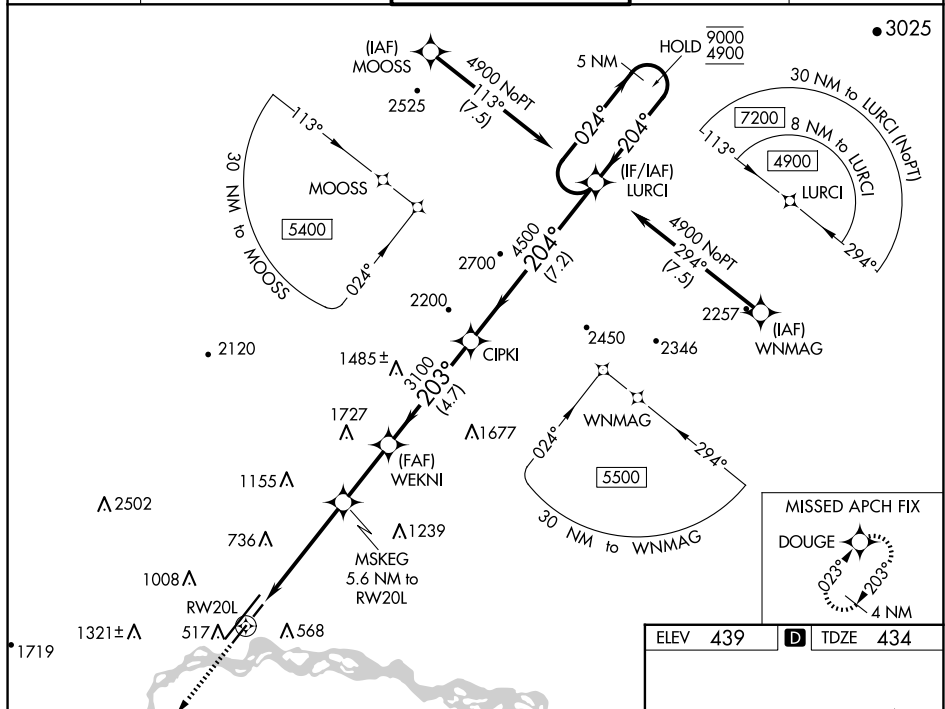
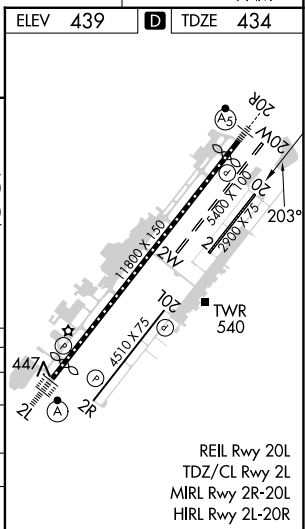


Figure 1-1: Sample Instrument Departure Procedure

The diagram illustrates a flight path starting from RW20L, passing through MSKEG, WEKNI, CIPKI, and LURCI, ending at a 5 NM Holding Pattern. Key altitudes and distances are marked.

CATEGORY	A	B	C	D
LPV DA		684- ³ / ₄	250 (300- ³ / ₄)	
RNAV/ VNAV		701- ⁷ / ₈	267 (300- ⁷ / ₈)	
RNAV MDA	920-1	486 (500-1)	920-1 ³ / ₈	486 (500-1 ³ / ₈)
C CIRCLING	920-1	481 (500-1)	920-1 ¹ / ₂ 481 (500-1 ¹ / ₂)	1000-2 561 (600-2)



AK, 12 JUN 2025 to 07 AUG 2025