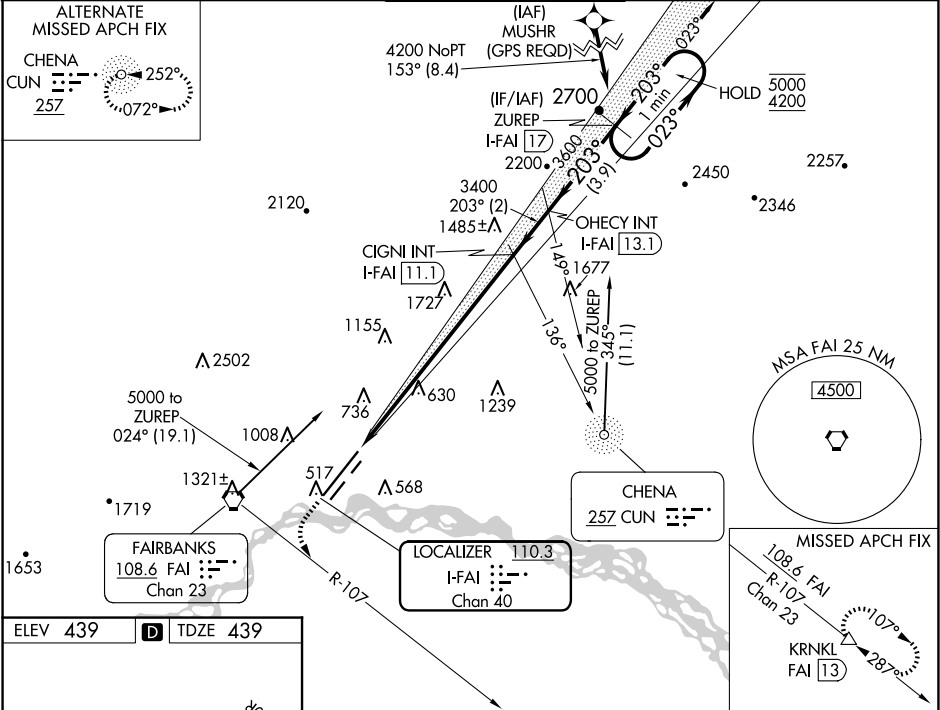


LOC/DME I-FAI	APP CRS	Rwy Idg	11050
110.3	203°	TDZE	439
Chan 40		Apt Elev	439

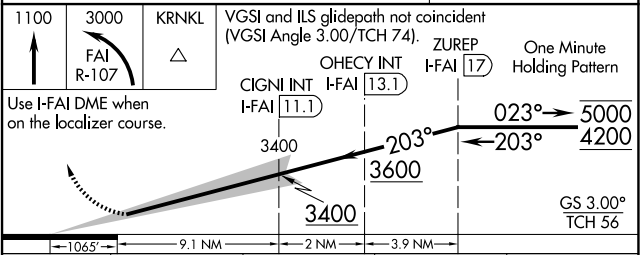
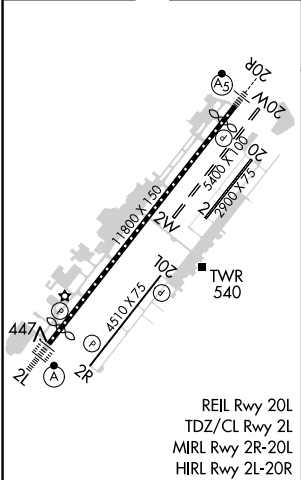
ILS Z RWY 20R (SA CAT I & II)
FAIRBANKS INTL (FAI) (PAFA)

DME required. DME required for procedure entry.	MALSR	MISSED APPROACH: Climb to 1100 then climbing left turn to 3000 on FAI VORTAC R-107 to KRNL/FAI VORTAC 13 DME and hold.
SA CAT I: Requires specific OPSPEC, MSPEC, or LOA approval. SA CAT II: Reduced lighting: requires specific OPSPEC, MSPEC, or LOA approval and use of autoland or HUD to touchdown.		

ATIS	FAIRBANKS APP CON	FAIRBANKS TOWER	GND CON	CLNC DEL
124.4	125.35 363.2	118.3 257.8	121.9	127.6



ELEV 439	TDZE 439
----------	----------



CATEGORY	A	B	C	D
S-ILS 20R	SA CAT I	RA 149/14	150	DA 589
S-ILS 20R	SA CAT II	RA 99/12	100	DA 539

SA CATEGORY I & II ILS SPECIAL AIRCREW & AIRCRAFT CERTIFICATION REQUIRED