




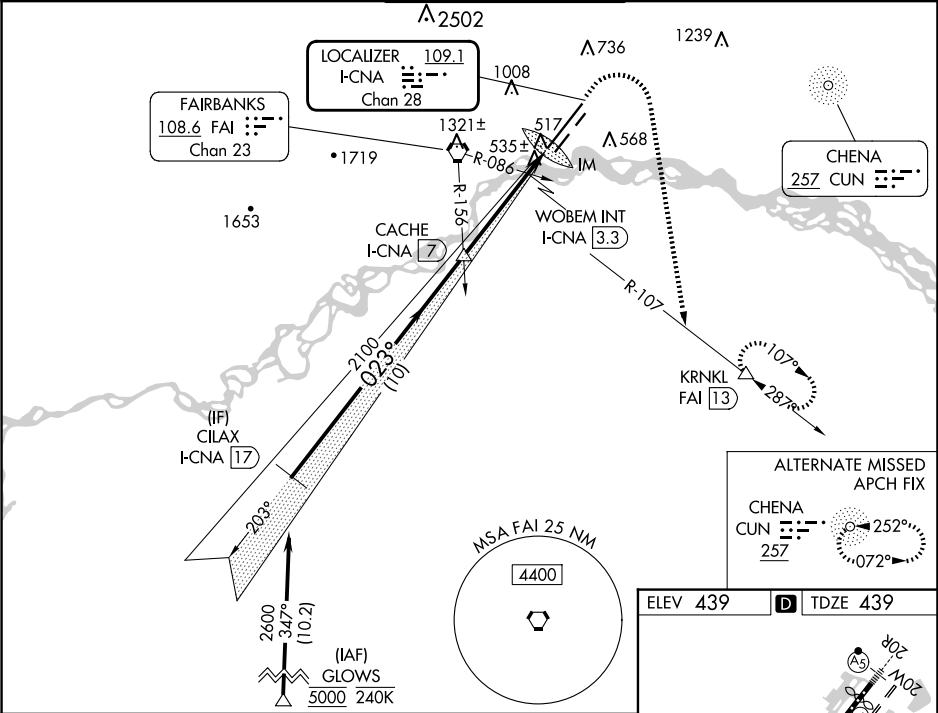
LOC/DME I-CNA	APP CRS	Rwy Idg	11050
109.1	023°	TDZE	439
Chan 28		Apt Elev	439

ILS or LOC RWY 2L

FAIRBANKS INTL (FAI) (PAFA)

RNP APCH - GPS.	ALSIF-2		MISSED APPROACH: Climb to 900 then climbing right turn to 5000 on heading 170° and FAI VORTAC R-107 to KRNL/FAI 13 DME and hold, continue climb-in-hold to 5000.
DME required.			
<div><div><div></div><div></div></div><div><div>Circling NA west of Rwy 2L-20R. Circling NA to Rwy 2W and 20W. For inop ALS, increase S-ILS 2L Cat E visibility to RVR 4000 and S-LOC 2L Cat C/D/E visibility to RVR 5500.</div><div>-29°C</div></div></div>			

ATIS	FAIRBANKS APP CON	FAIRBANKS TOWER	GND CON	CLNC DEL
124.4	125.35 363.2	118.3 257.8	121.9	127.6



VGSI and ILS glidepath not coincident (VGSI Angle 3.00/TCH 73).					
CILAX I-CNA 17	CACHE I-CNA 7	WOBEM INT I-CNA 3.3	I-CNA 2	IM	KRNL
2600	2100	900			
GS 3.00° TCH 56					
10 NM	3.7 NM	1.1 NM	0.2		
CATEGORY	A	B	C	D	E
S-ILS 2L	639/18 200 (200-½)				
S-LOC 2L	800/24	361 (400-½)	800/35	361 (400-¾)	
CIRCLING	880-1 441 (500-1)	900-1 461 (500-1)	900-1½ 461 (500-1½)	1020-2 581 (600-2)	1060-2¼ 621 (700-2¼)

