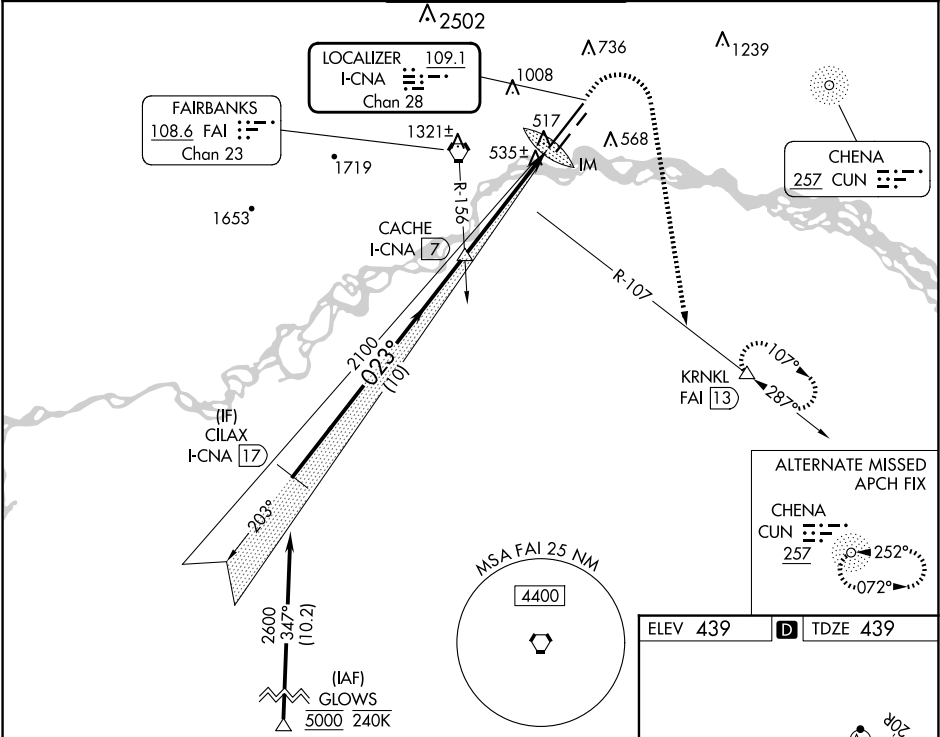


LOC/DME I-CNA	APP CRS	Rwy Idg	11050
109.1	023°	TDZE	439
Chan 28		Apt Elev	439

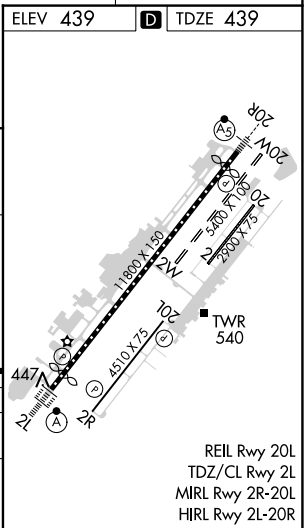
ILS RWY 2L (SA CAT I)
FAIRBANKS INTL (FAI) (PAFA)

RNP APCH - GPS.	ALSF-2	MISSED APPROACH: Climb to 900 then climbing right turn to 5000 on heading 170° and FAI VORTAC R-107 to KRNL/FAI 13 DME and hold, continue climb-in-hold to 5000.
DME required.		
Requires specific OPSPEC, MSPEC, or LOA approval.		
-29°C		

ATIS	FAIRBANKS APP CON	FAIRBANKS TOWER	GND CON	CUNC DEL
124.4	125.35 363.2	118.3 257.8	121.9	127.6



VGSI and ILS glidepath not coincident (VGSI Angle 3.00°/TCH 73).					900 ↑		5000 hdg 170°		FAI R-107		KRNL △	
CILAX I-CNA 17		CACHE I-CNA 7										
2600		2100		2100		IM						
GS 3.00° TCH 56		023°										
		10 NM		5.1 NM		1050'						
CATEGORY		A		B		C		D				
S-ILS 2L				RA 139/14		150 DA 589						
SA CATEGORY I ILS - SPECIAL AIRCREW & AIRCRAFT CERTIFICATION REQUIRED												



AK, 12 JUN 2025 to 07 AUG 2025

AK, 12 JUN 2025 to 07 AUG 2025