

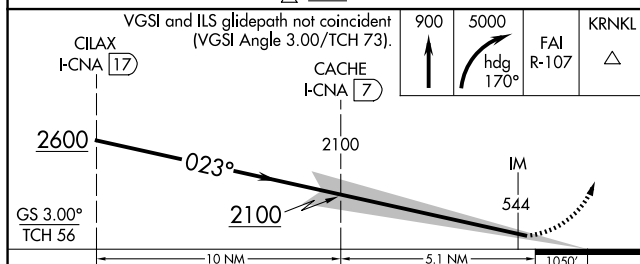
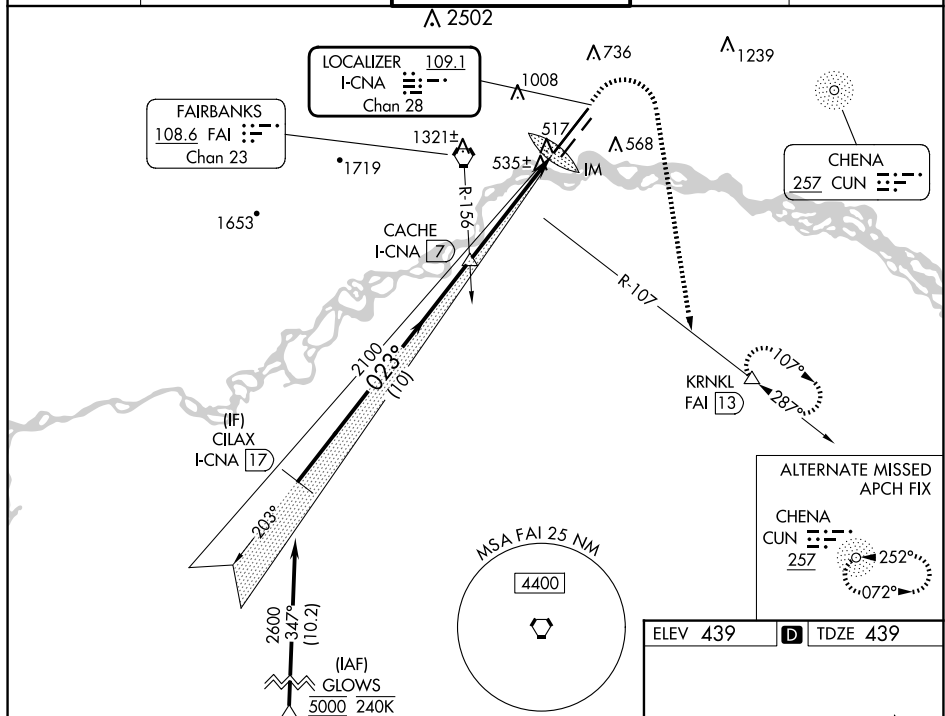
ILS RWY 2L (CAT II & III)
FAIRBANKS INTL (FAI) (PAFA)

MISSED APPROACH: Climb to 900 then climbing right turn to 5000 on heading 170° and FAI VORTAC R-107 to KRNKL/FAI 13 DME and hold, continue climb-in-hold to 5000.



T CAT II: RVR 1000 authorized with specific OPSPEC, MSPEC,
❄ -29°C or LOA approval and use of autoland or HUD to touchdown.

ATIS 124.4	FAIRBANKS APP CON 125.35 363.2	FAIRBANKS TOWER 118.3 257.8	GND CON 121.9	CLNC DEL 127.6
---------------	-----------------------------------	--------------------------------	------------------	-------------------



CATEGORY	A	B	C	D
S-ILS 2L	CAT II RA 104/12 100 DA 539			
S-ILS 2L	CAT III RVR 06			

CATEGORY II & III ILS - SPECIAL AIRCREW
& AIRCRAFT CERTIFICATION REQUIRED

